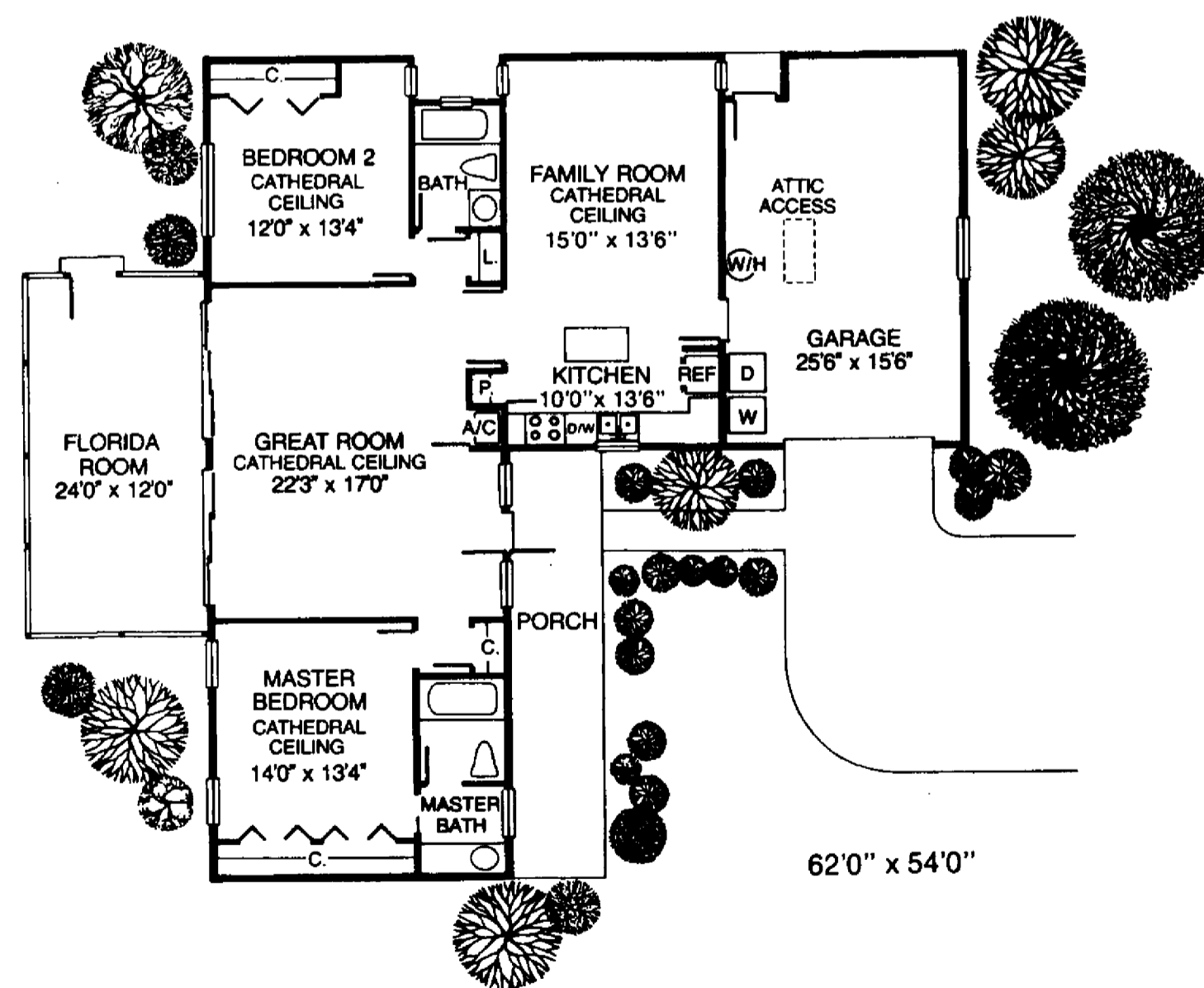
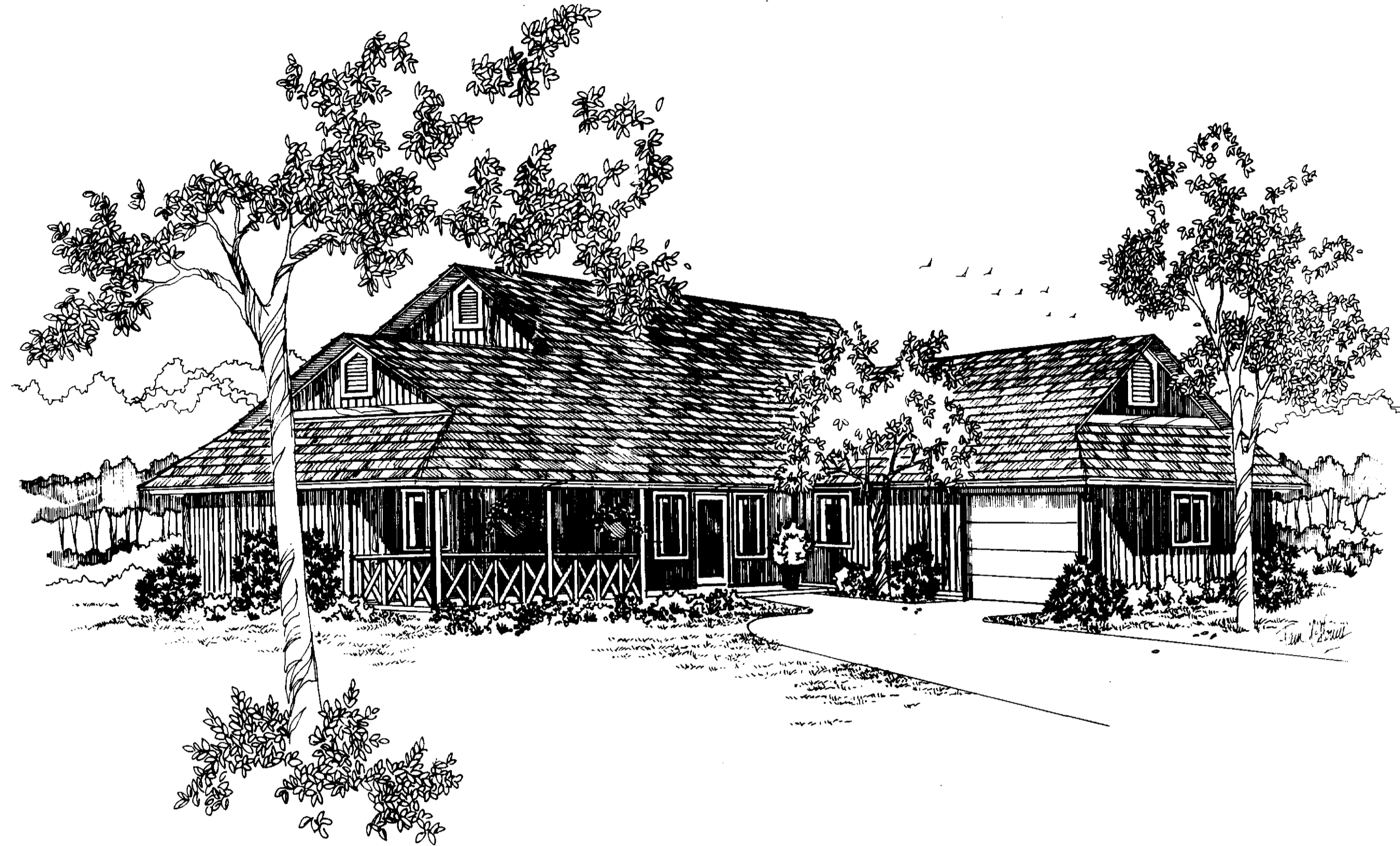


Shady Haven



These drawings and specifications are experimental in nature and the energy performance of the design has not been tested or evaluated in actual construction. Also note that these homes were designed for use only in the State of Florida and may be more appropriate for use in some climatic regions within the state than others.

The Florida Solar Energy Center, and the Designer, Architects, Judges, Plans Designers, and Artists involved in developing these drawings and specifications (hereinafter referred to "FSEC/Contractors") make no statement, representation, claim or warranty, whether express, implied or statutory with respect to these plans and specifications. Any implied warranties of merchantability or fitness for a particular purpose are hereby disclaimed.

FSEC/Contractors assume no liability for, and by its use Purchaser hereby releases FSEC/Contractors from all liability for, damages, losses or injury, whether direct, indirect, consequential or incidental, including, but not limited to personal injury, death and damage to property, whether or not due to or caused by FSEC/Contractors negligence, that may arise from or be connected with uses of these drawings and specifications. FSEC/Contractor does not authorize any person, whether employees or agents of FSEC/Contractor or otherwise, to make any representation or warranty or to assume any liability with respect to these drawings and specifications.

FLORIDA SOLAR ENERGY CENTER
300 STATE RD 401 CAPE CANAVERAL, FL 32920

COPYRIGHT 1989 FLORIDA SOLAR ENERGY CENTER

1989 ENERGY-EFFICIENT FLORIDA HOME
FLORIDA SOLAR ENERGY CENTER
DESIGNED BY TOM WOOD U. OF FLORIDA
DEPT. OF ARCHITECTURE GAINESVILLE, FL.

COVER
SHEET

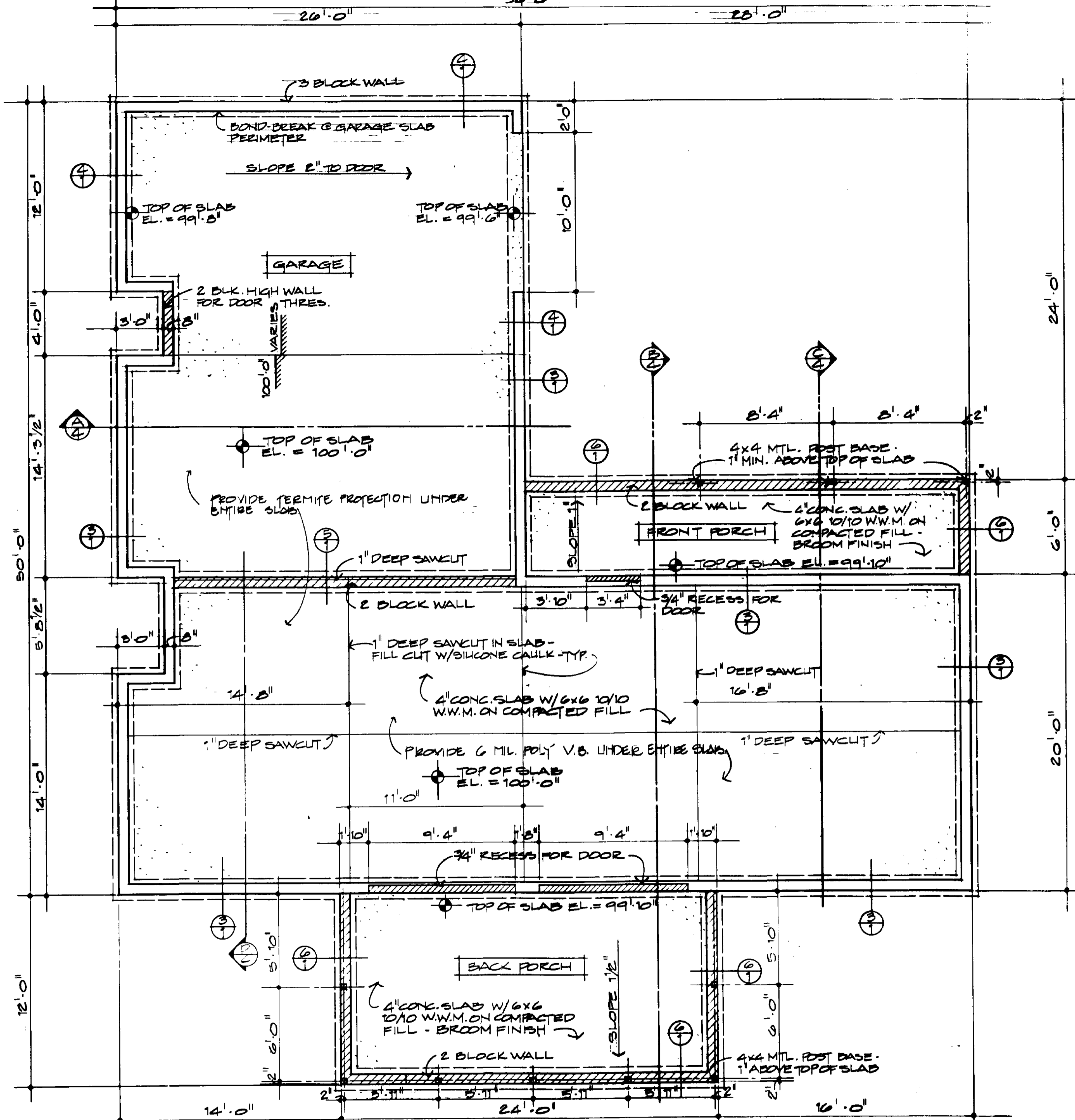
DRAWING INDEX

1	SITE, FOUNDATION & ROOF FRAMING PLANS & DETAILS
2	FLOOR PLAN & INTERIOR ELEVATIONS
3	EXTERIOR ELEVATIONS
4	BUILDING CROSS-SECTIONS, WALL SECTIONS & DETAILS
5	ELECTRICAL & PLUMBING PLAN
6	MECHANICAL PLAN

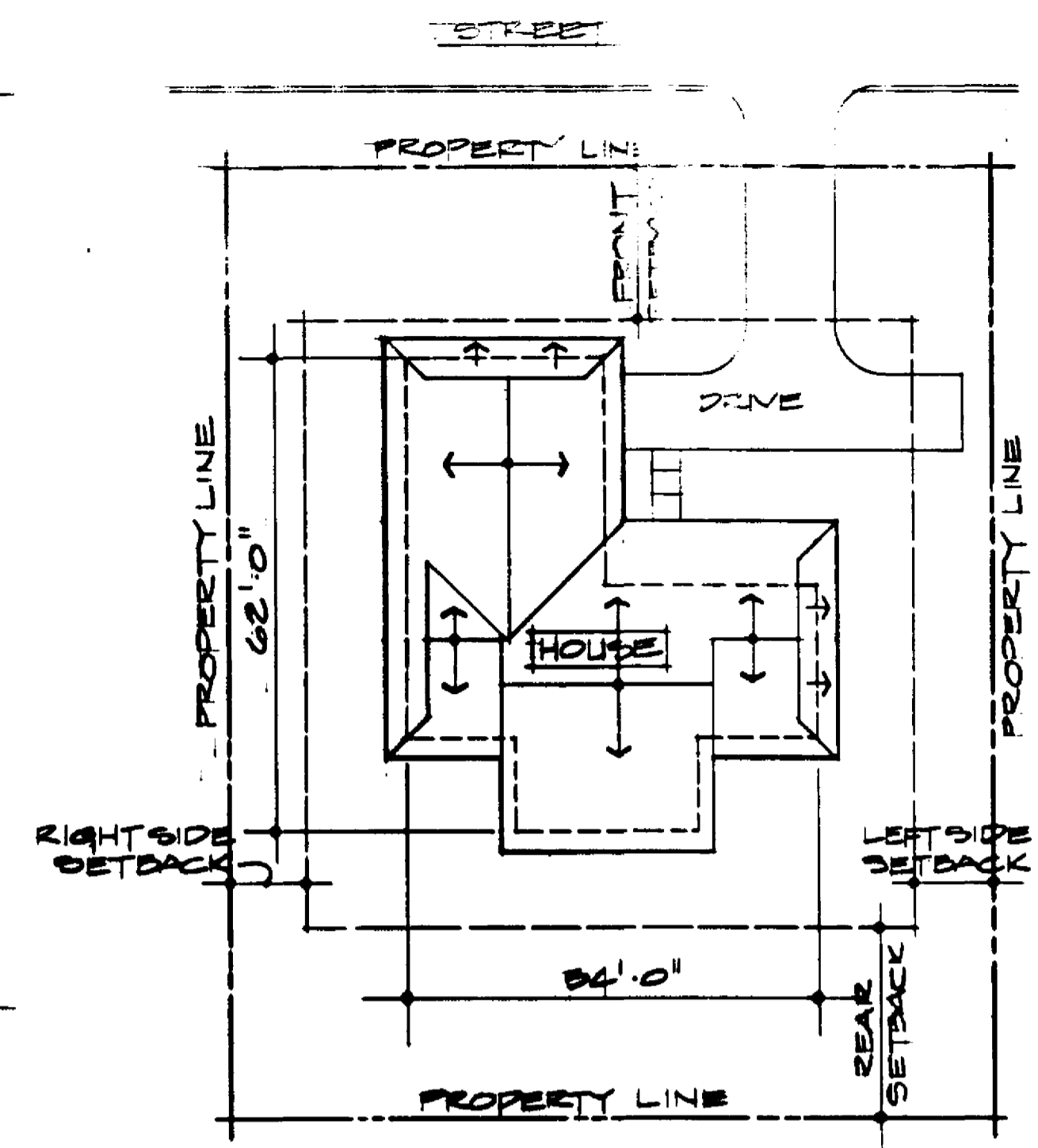
These drawings and specifications are experimental in nature and the energy performance of the design has not been tested or evaluated in actual construction. Also note that these homes were designed for use only in the State of Florida and may be more appropriate for use in some climatic regions within the state than others.

The Florida Solar Energy Center, and the Designer, Architects, Judges, Plans Designers, and Artists involved in developing these drawings and specifications (hereinafter referred to "FSEC/Contractors") make no statement, representation, claim or warranty, whether express, implied or statutory with respect to these plans and specifications. Any implied warranties of merchantability or fitness for a particular purpose are hereby disclaimed.

FSEC/Contractors assume no liability for, and by its use Purchaser hereby releases FSEC/Contractors from all liability for, damages, losses or injury, whether direct, indirect, consequential or incidental, including, but not limited to personal injury, death and damage to property, whether or not due to or caused by FSEC/Contractors negligence, that may arise from or be connected with uses of these drawings and specifications. FSEC/Contractor does not authorize any person, whether employees or agents of FSEC/Contractor or otherwise, to make any representation or warranty or to assume any liability with respect to these drawings and specifications.



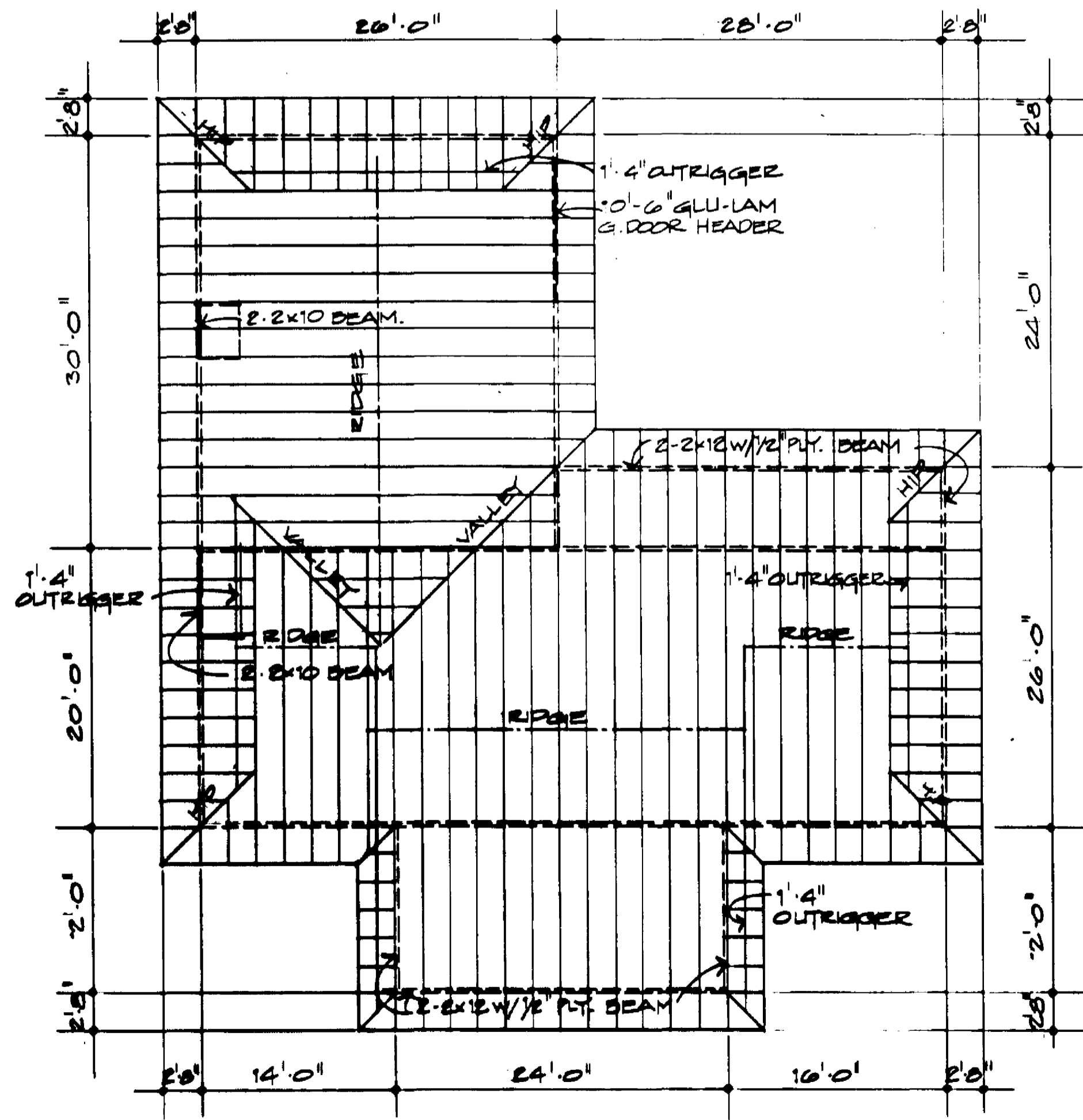
② FOUNDATION PLAN
SCALE 1/4" = 1'-0"



① TYPICAL SITE PLAN
NOT TO SCALE

↑ NORTH RECOMMEND. ORIENTATION

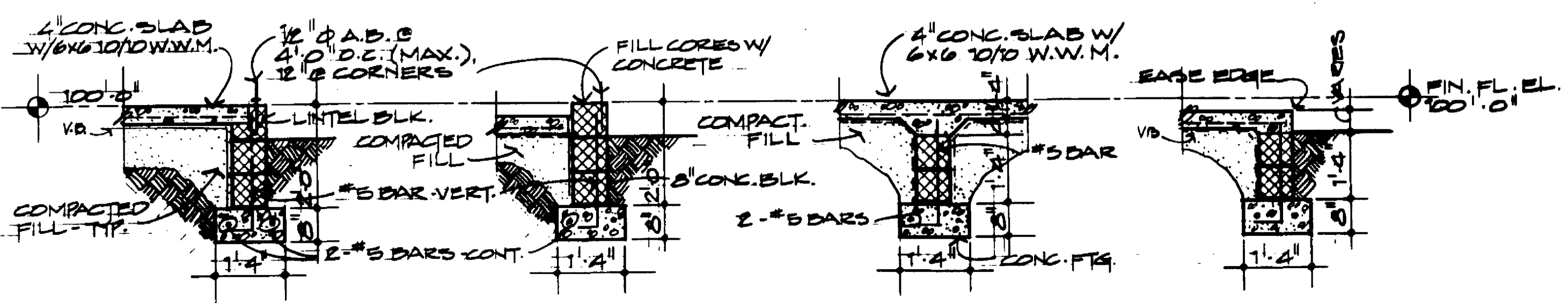
ZONE DISTRICT: _____
 FRONT SETBACK: _____
 REAR SETBACK: _____
 LEFT SIDE SETBACK: _____
 RIGHT SIDE SETBACK: _____
 PROPERTY DIM.: _____



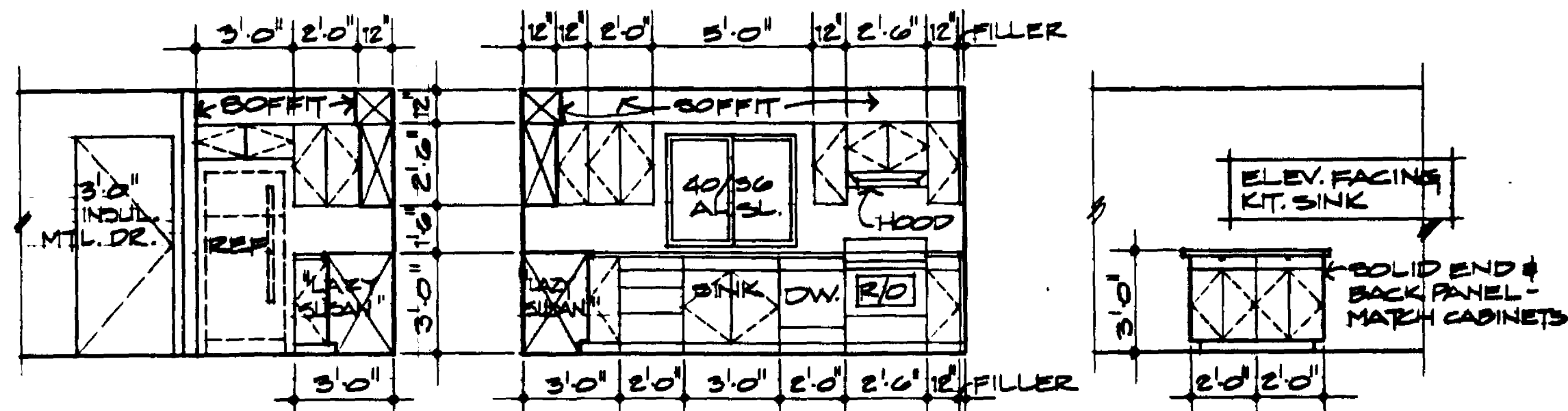
⑦ ROOF FRAMING PLAN
SCALE 1/8" = 1'-0"

GENERAL NOTES:

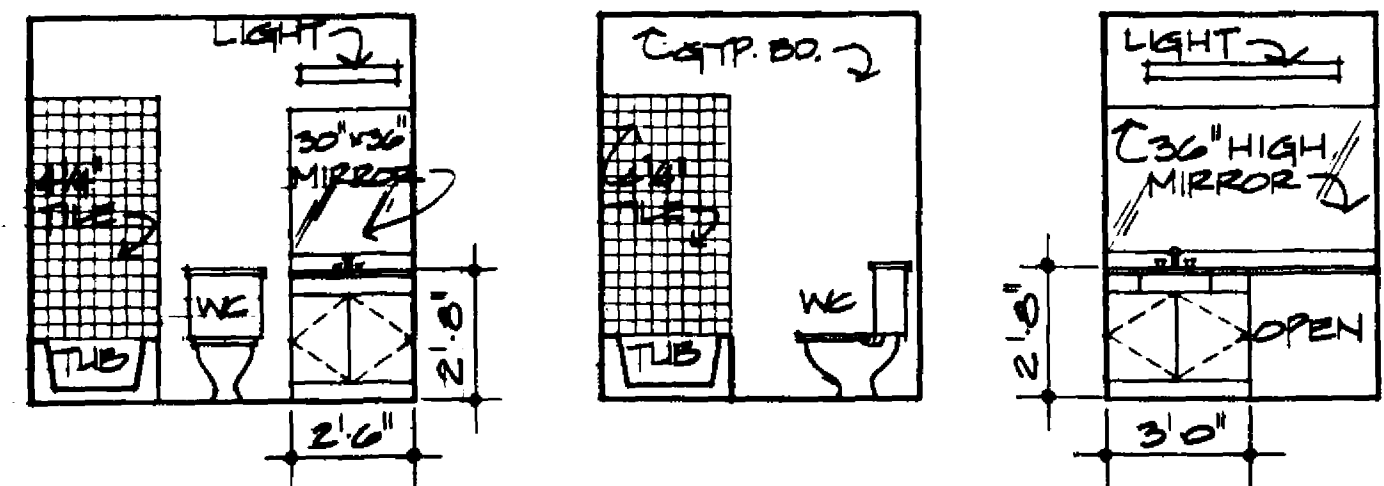
- ALL TRUSSES 2'-0" O.C. UNLESS NOTED OTHERWISE.
- SECURE TRUSSES TO WALLS W/HURRICANE CLIPS @ ALL BEARING POINTS.



③ TYP. 3 BLK. WALL SCALE 1/2" = 1'-0" **④ GARAGE** SCALE 1/2" = 1'-0" **⑤ INT. FTG.** SCALE 1/2" = 1'-0" **⑥ PORCH FTG.** SCALE 1/2" = 1'-0"



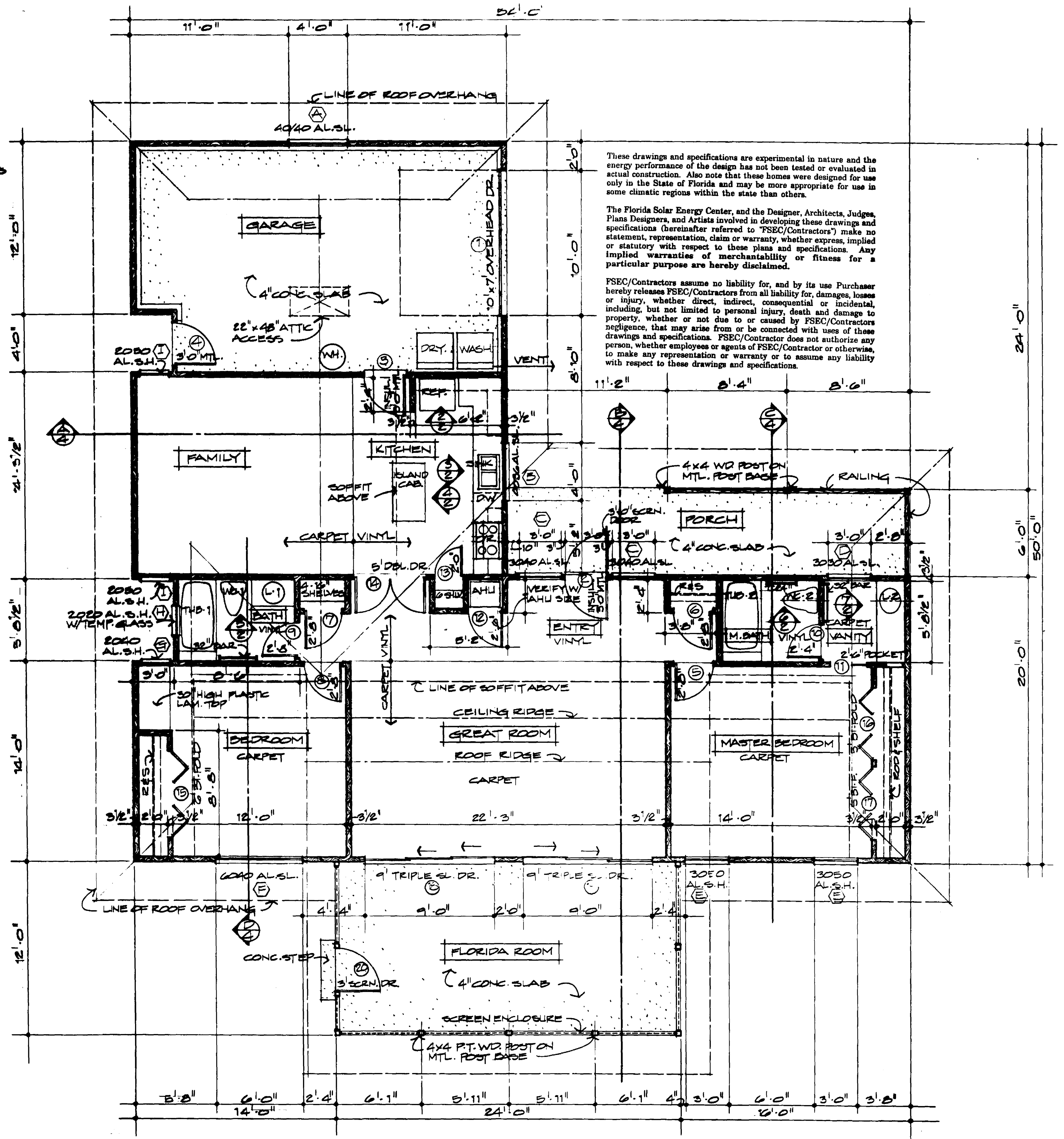
1 N. KIT. ELEV. SCALE 1/4"=1'-0"
 2 EAST KIT. ELEV. SCALE 1/4"=1'-0"
 3 ISLAND SCALE 1/4"=1'-0"



4 BATH SCALE 1/4"=1'-0"
 5 M. BATH SCALE 1/4"=1'-0"
 6 VANITY SCALE 1/4"=1'-0"

DOOR SCHEDULE					
DR NO.	DOOR SIZE W x H	THICK.	TYPE	FRAME	REMARKS
1	10'-0" x 7'-0"	-	O.H.	WOOD	4 PANEL, OVERHEAD
2	3'-0" x 6'-8"	1 3/4"	MTL.		INSULATED
3					
4					
5	2'-8" x 6'-8"	1 3/8"	H.C.		BIRCH
6					
7					
8					
9	2'-8" x 6'-8"				
10					
11	2'-6" x 6'-8"				POCKET, BIRCH
12					BIRCH
13	2'-0" x 6'-8"				
14	2'-6" x 6'-8"				DOUBLE DOOR
15	6'-0" x 6'-8"				3-FOLD, BIRCH
16	3'-0" x 6'-8"				
17					
18	9'-0" x 6'-8"	-	MTL.	ALUM.	3-PANEL SLIDER
19					
20	3'-0" x 6'-8"	-			SCREEN

WINDOW SCHEDULE					
TYPE	WINDOW SIZE W x H	OPER.	FRAME	GLAZING	REMARKS
A	4'-0" x 4'-0"	H.SL.	ALUM.	SINGLE	
B	2'-0" x 3'-6"				
C	3'-0" x 4'-0"				
D	3'-0" x 3'-0"				
E	3'-0" x 5'-0"	SINGLEHS			
F	6'-0" x 4'-0"	H.SL.			
G	2'-0" x 4'-0"	SINGLEHS			
H	2'-0" x 2'-0"				TEMPERED, FROSTED
I	2'-0" x 5'-0"				



These drawings and specifications are experimental in nature and the energy performance of the design has not been tested or evaluated in actual construction. Also note that these homes were designed for use only in the State of Florida and may be more appropriate for use in some climatic regions within the state than others.

The Florida Solar Energy Center, and the Designer, Architects, Judges, Plans Designers, and Artists involved in developing these drawings and specifications (hereinafter referred to "FSEC/Contractors") make no statement, representation, claim or warranty, whether express, implied or statutory with respect to these plans and specifications. Any implied warranties of merchantability or fitness for a particular purpose are hereby disclaimed.

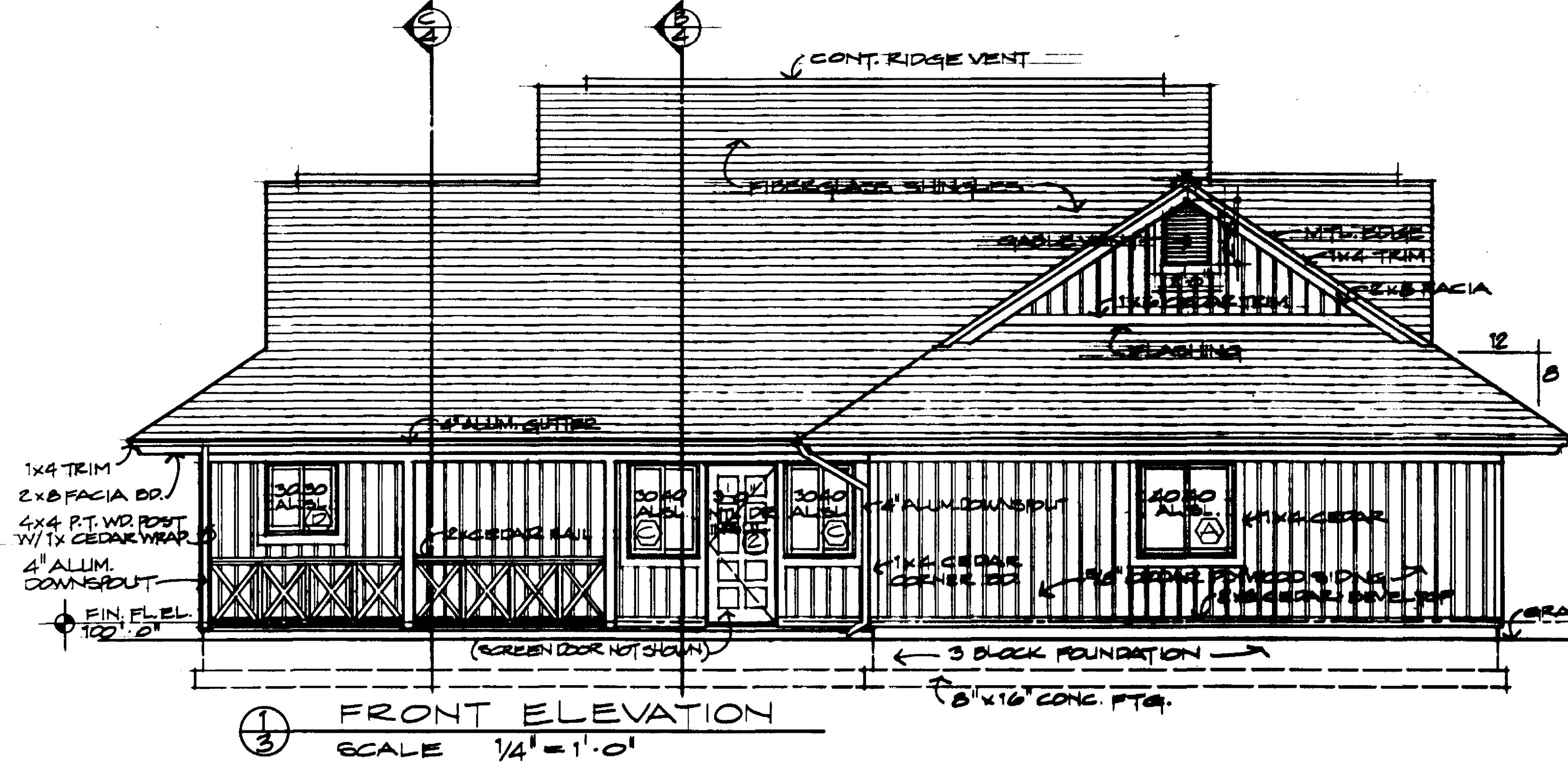
FSEC/Contractors assume no liability for, and by its use Purchaser hereby releases FSEC/Contractors from all liability for, damages, losses or injury, whether direct, indirect, consequential or incidental, including, but not limited to personal injury, death and damage to property, whether or not due to or caused by FSEC/Contractors negligence, that may arise from or be connected with uses of these drawings and specifications. FSEC/Contractor does not authorize any person, whether employee or agent of FSEC/Contractor or otherwise, to make any representation or warranty or to assume any liability with respect to these drawings and specifications.



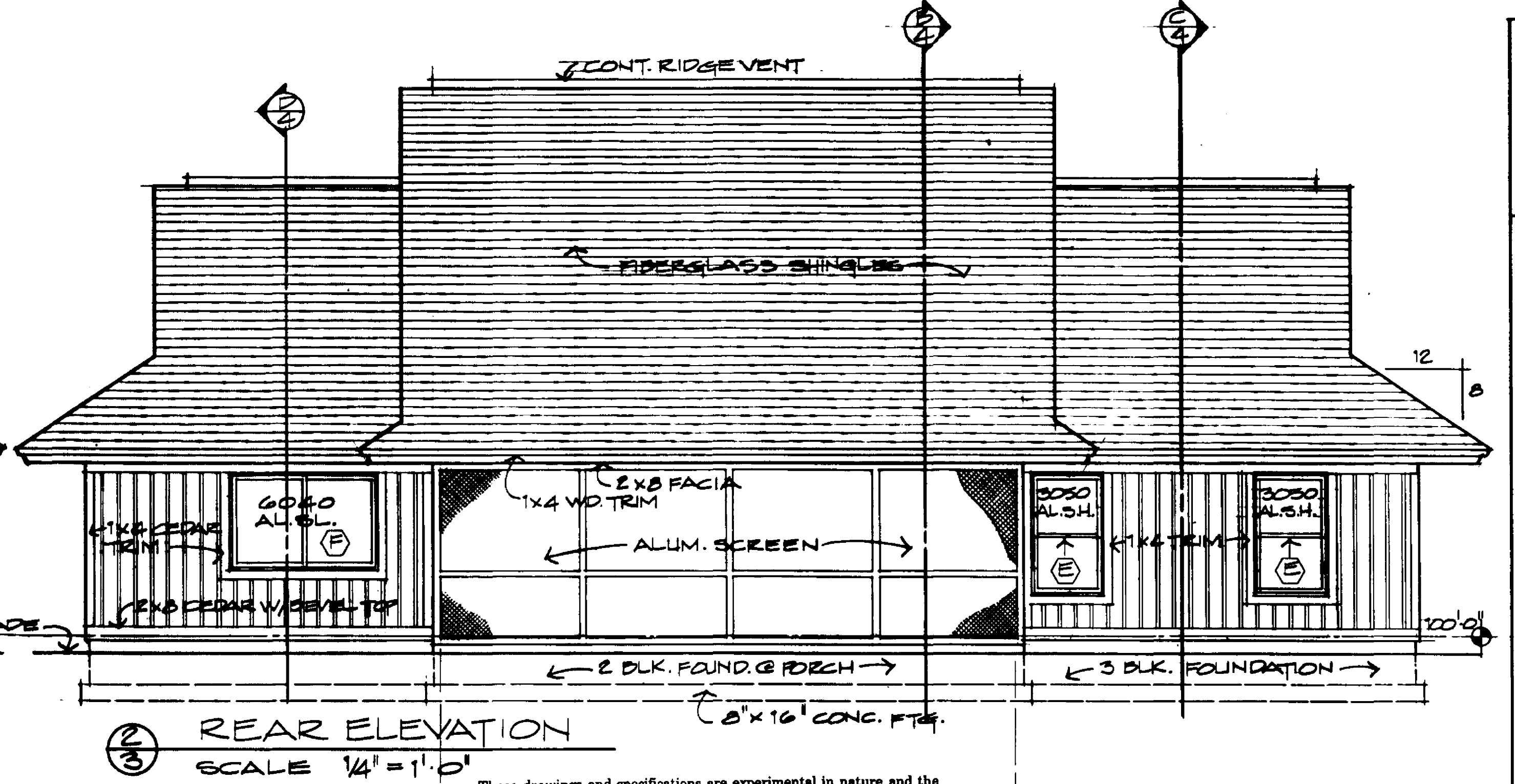
1 FLOOR PLAN SCALE 1/4"=1'-0"

GENERAL NOTES:
 1. ALL DIMENSIONS ARE TO FACE OF STUD EXCEPT WINDOWS & DOORS - VERIFY R.O. WITH MANUFACTURER.

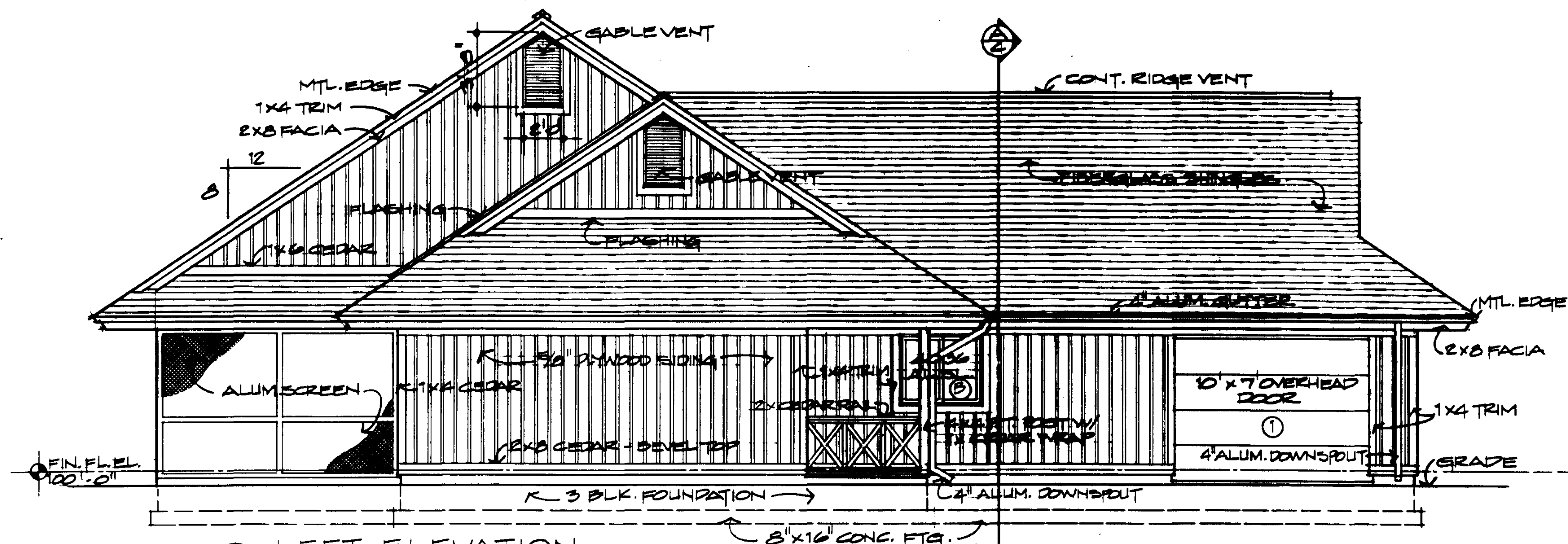
1989 ENERGY-EFFICIENT FLORIDA HOME
 FLORIDA SOLAR ENERGY CENTER
 FLOOR PLAN & INTERIOR ELEVATIONS



① FRONT ELEVATION
SCALE 1/4" = 1'-0"



② REAR ELEVATION
SCALE 1/4" = 1'-0"

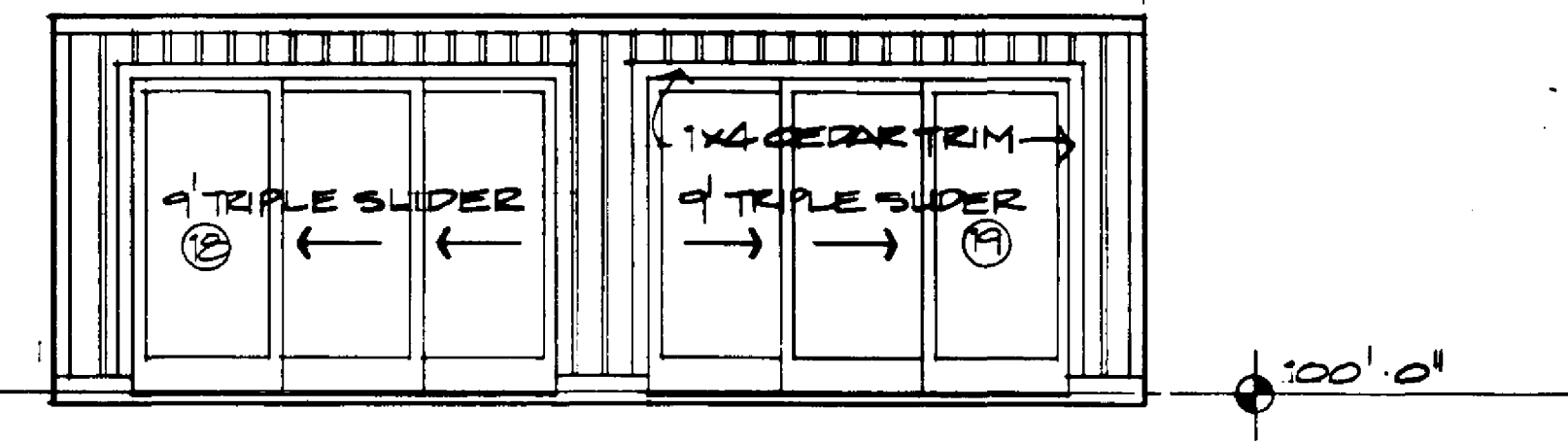


③ LEFT ELEVATION
SCALE 1/2" = 1'-0"

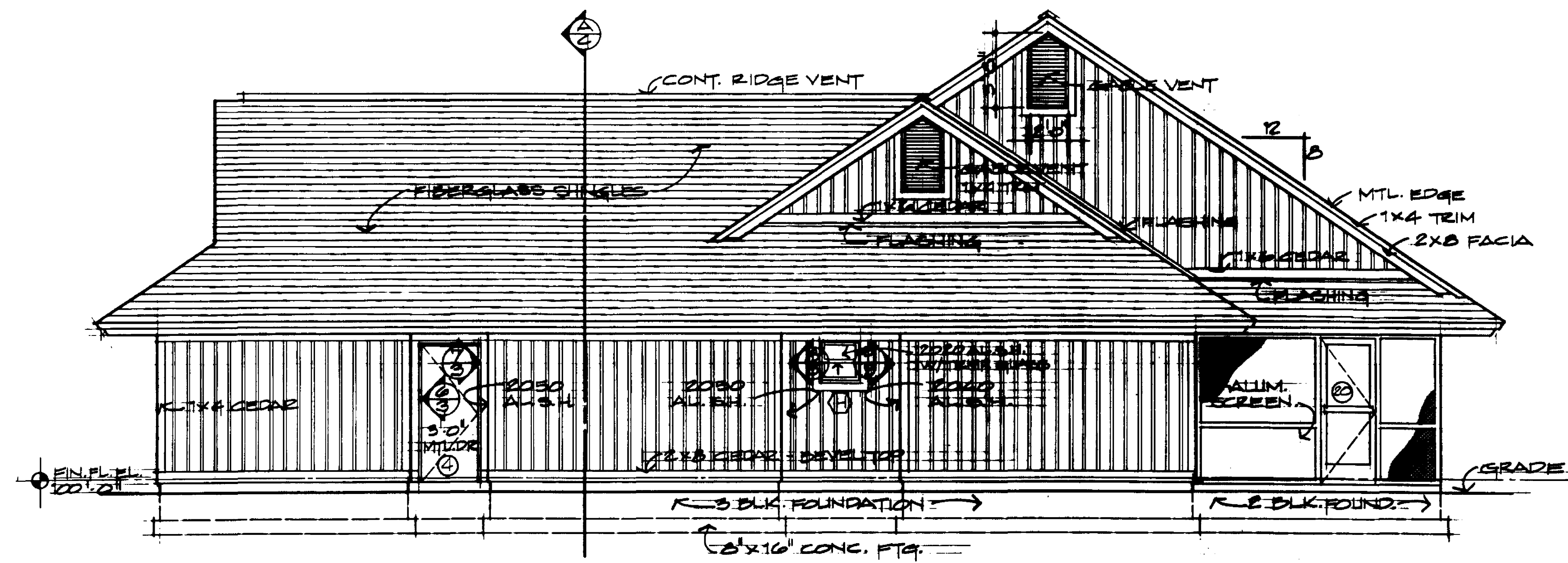
These drawings and specifications are experimental in nature and the energy performance of the design has not been tested or evaluated in actual construction. Also note that these homes were designed for use only in the State of Florida and may be more appropriate for use in some climatic regions within the state than others.

The Florida Solar Energy Center, and the Designer, Architects, Judges, Plans Designers, and Artists involved in developing these drawings and specifications (hereinafter referred to "FSEC/Contractors") make no statement, representation, claim or warranty, whether express, implied or statutory with respect to these plans and specifications. Any implied warranties of merchantability or fitness for a particular purpose are hereby disclaimed.

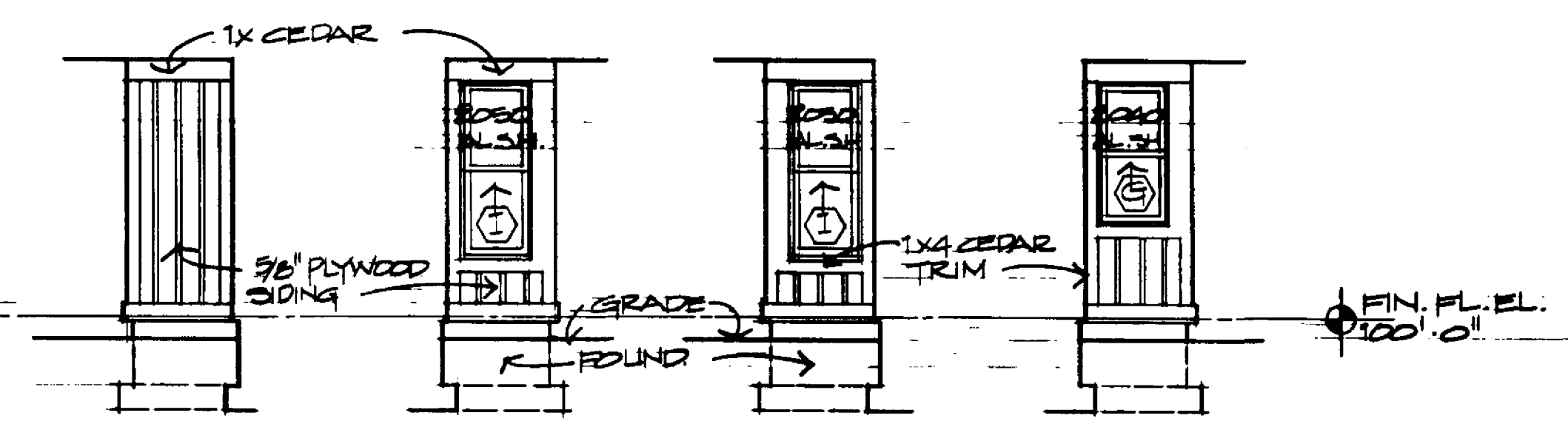
FSEC/Contractors assume no liability for, and by its use Purchaser hereby releases FSEC/Contractors from all liability for, damages, losses or injury, whether direct, indirect, consequential or incidental, including, but not limited to personal injury, death and damage to property, whether or not due to or caused by FSEC/Contractors negligence, that may arise from or be connected with uses of these drawings and specifications. FSEC/Contractor does not authorize any person, whether employees or agents of FSEC/Contractor or otherwise, to make any representation or warranty or to assume any liability with respect to these drawings and specifications.



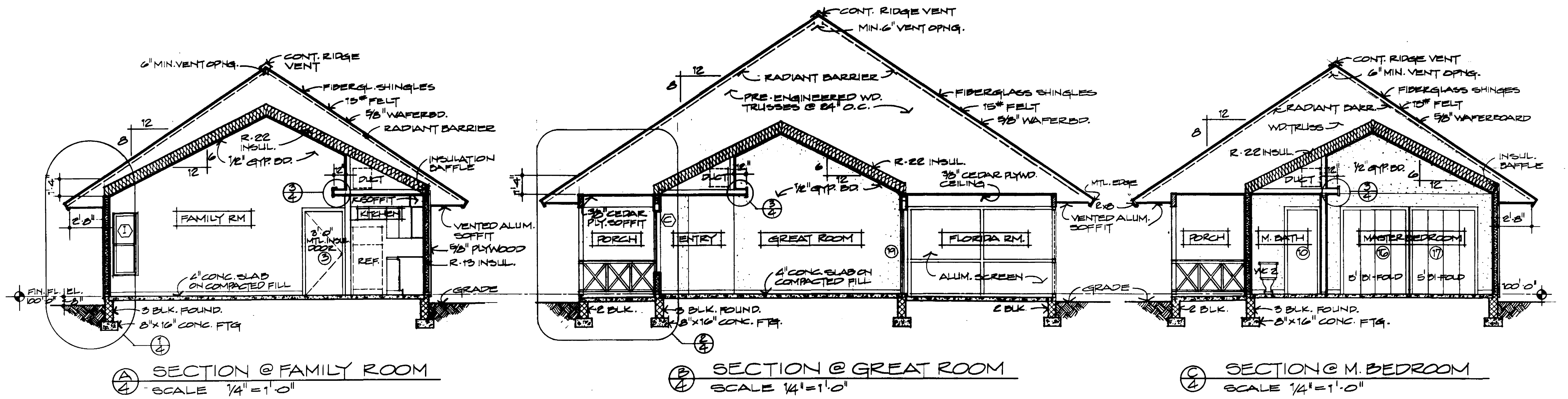
④ FLORIDA RM. ELEVATION
SCALE 1/4" = 1'-0"



⑤ RIGHT ELEVATION
SCALE 1/4" = 1'-0"



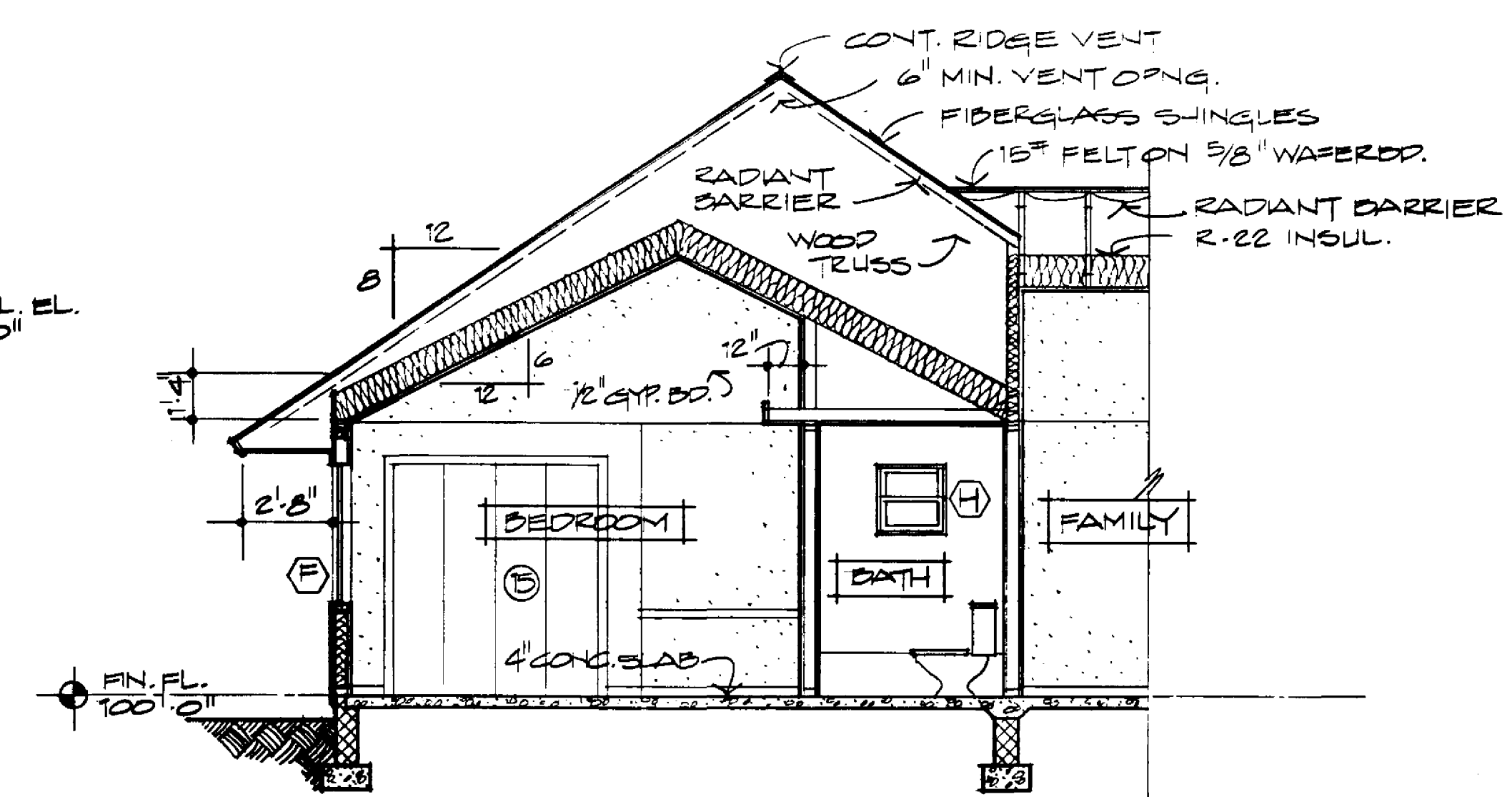
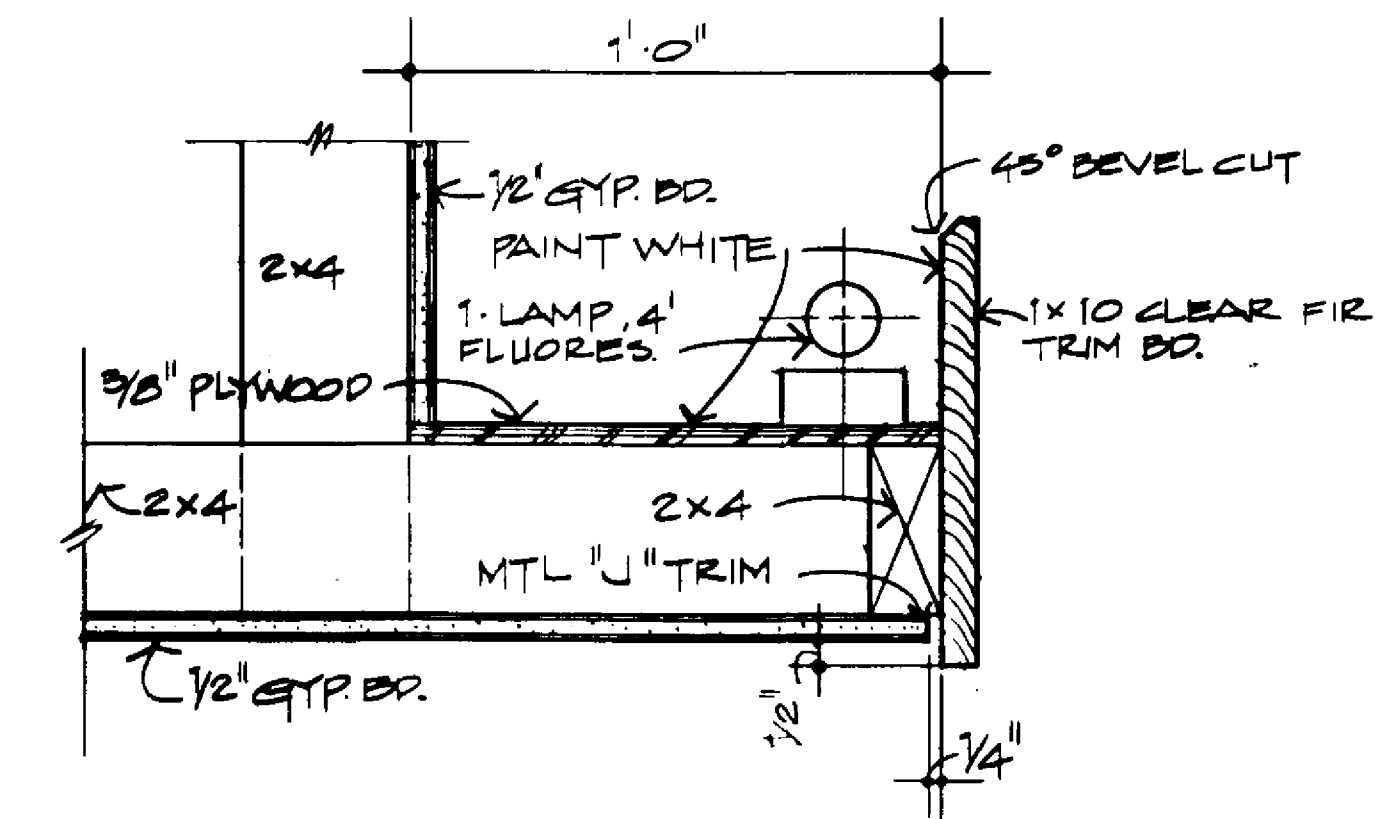
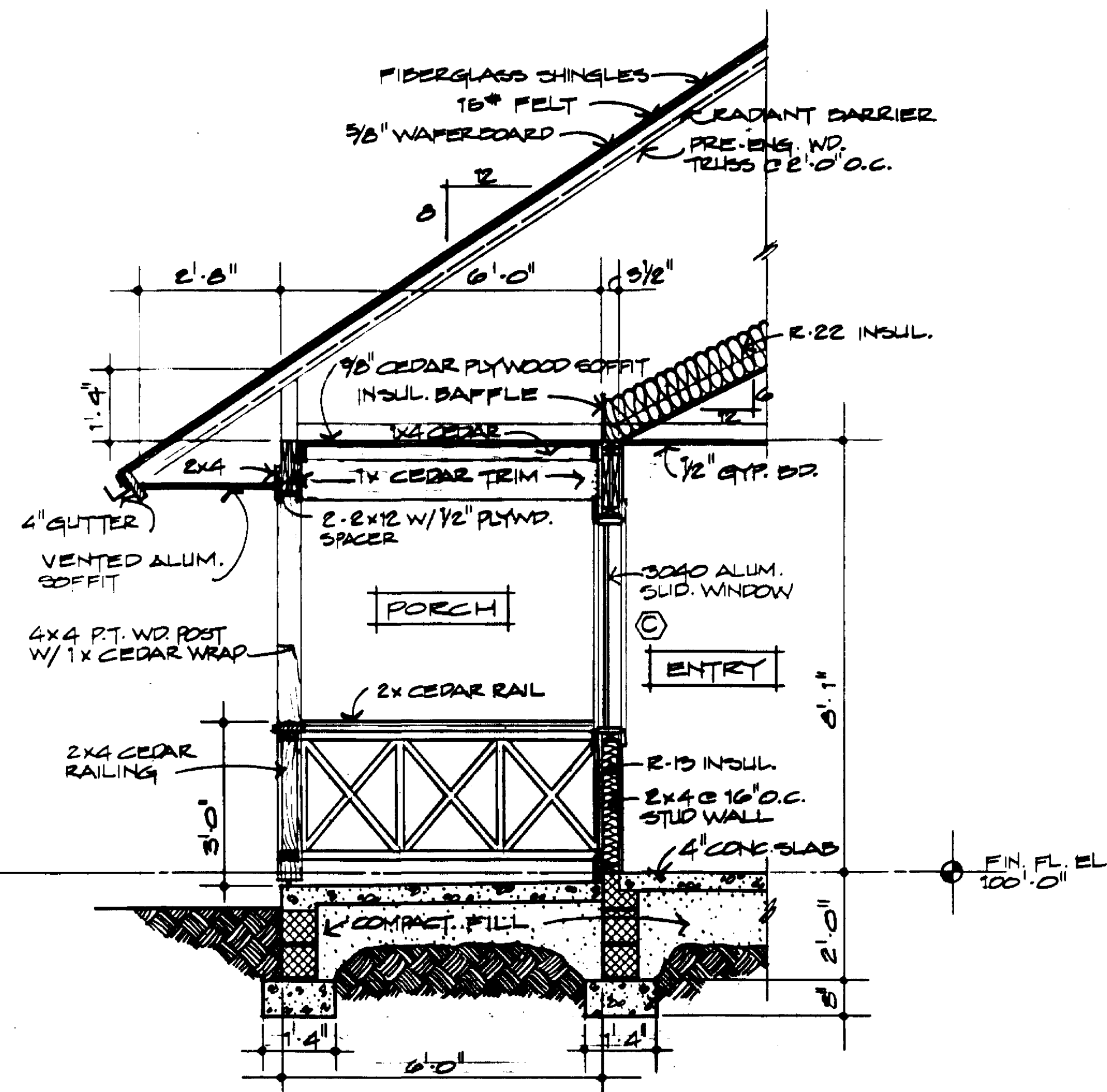
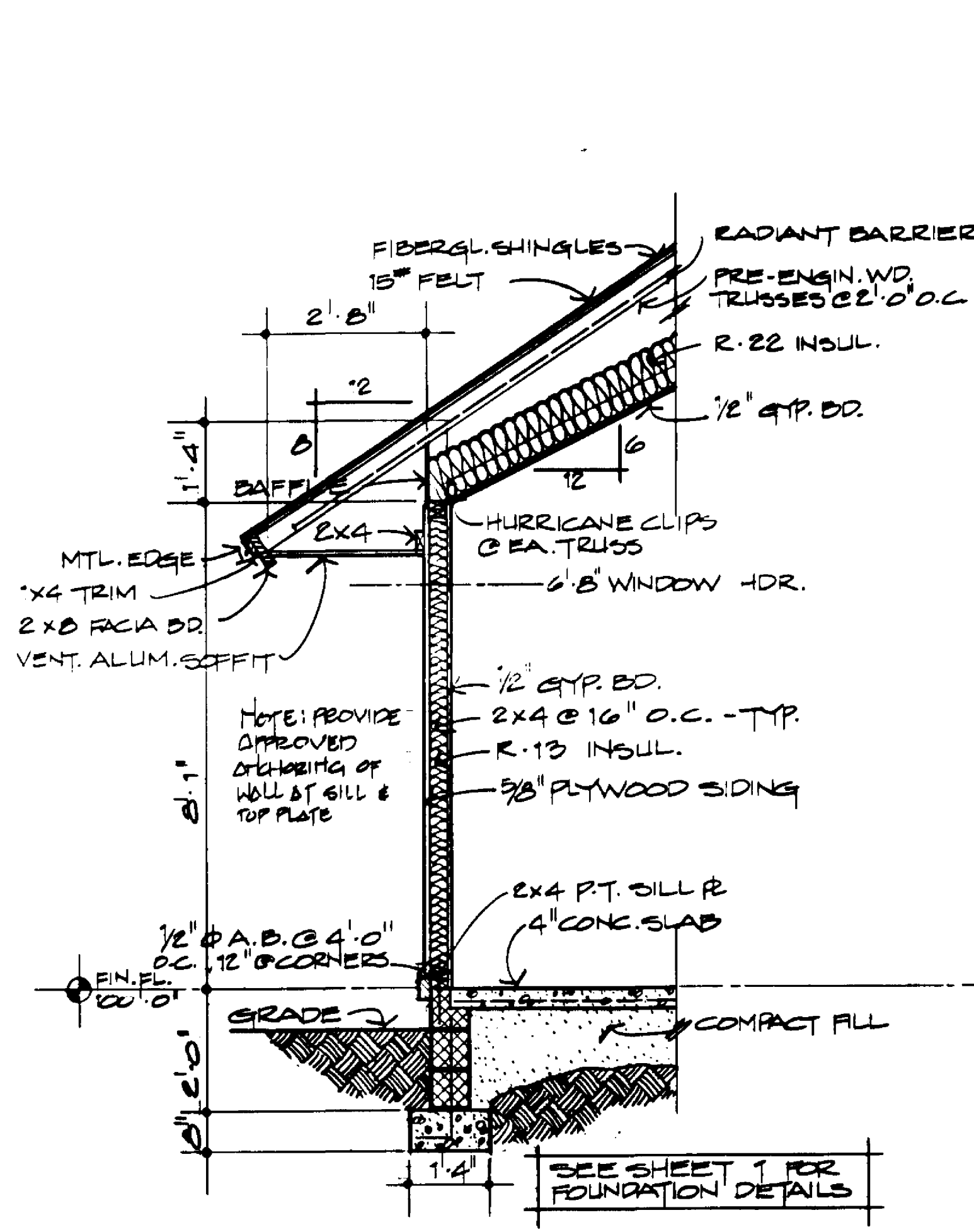
⑥ S. ELEV. 1/4" = 1'-0" ⑦ N. ELEV. 1/4" = 1'-0" ⑧ S. ELEV. 1/4" = 1'-0" ⑨ N. ELEV. 1/4" = 1'-0"

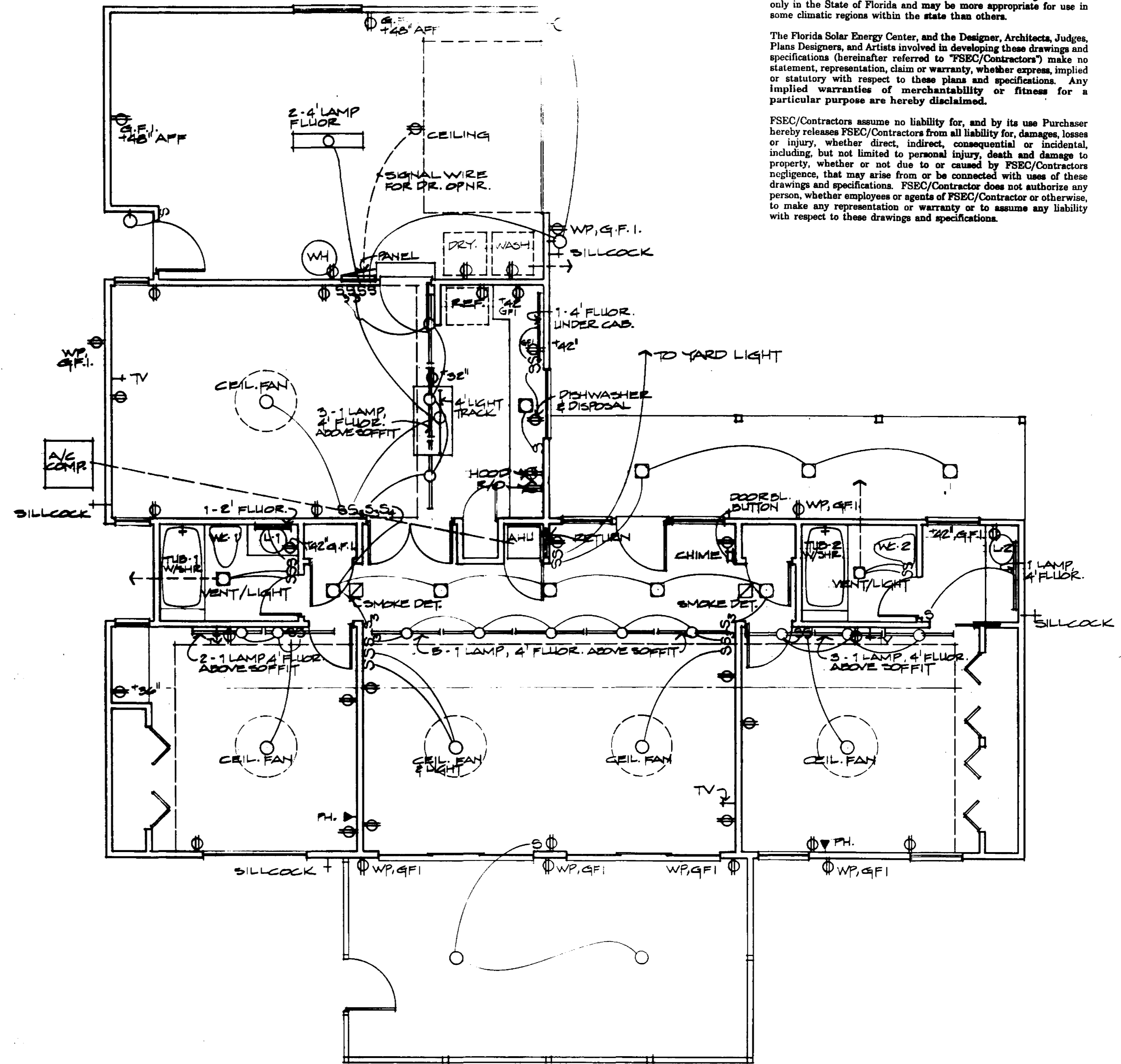
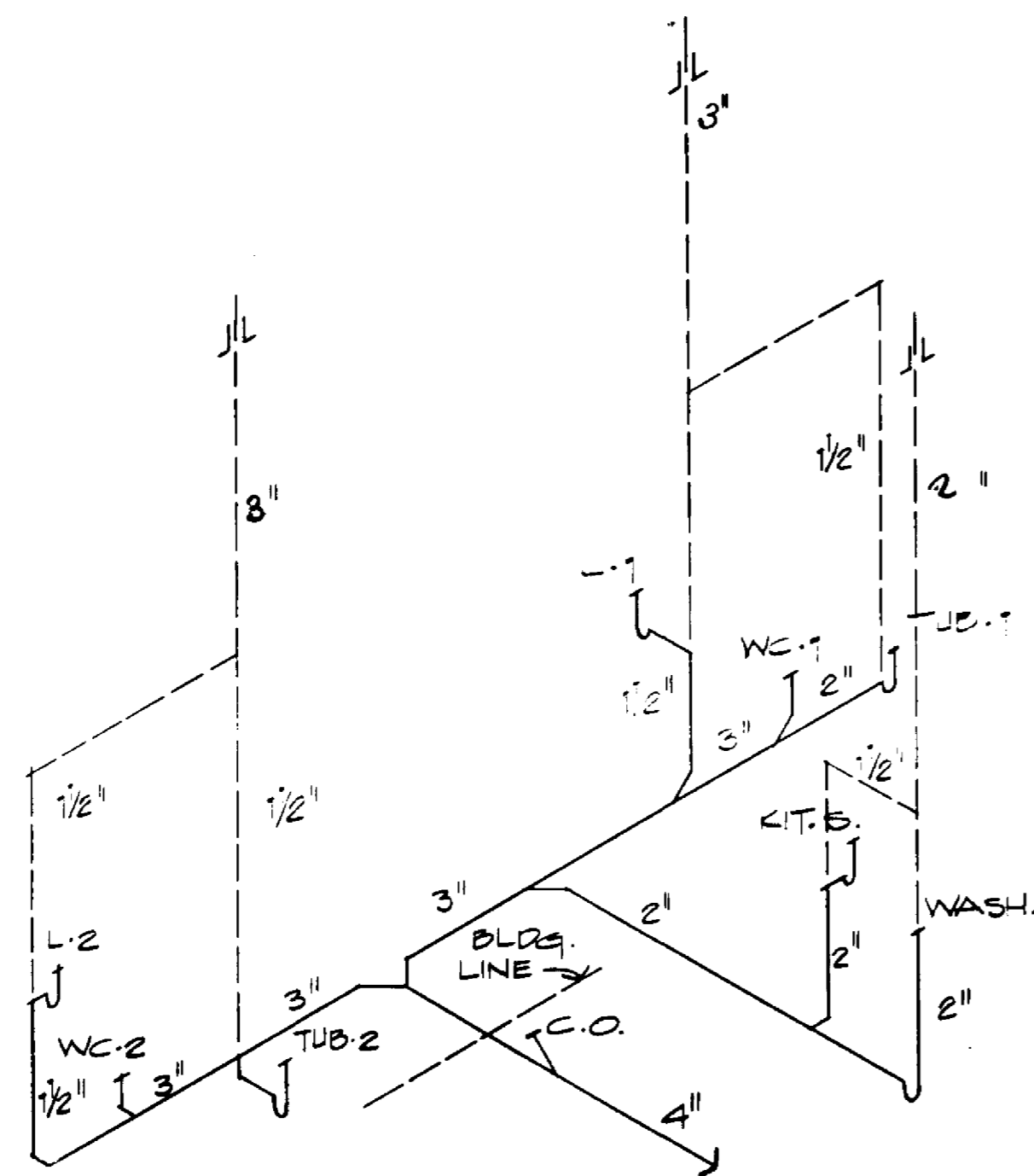
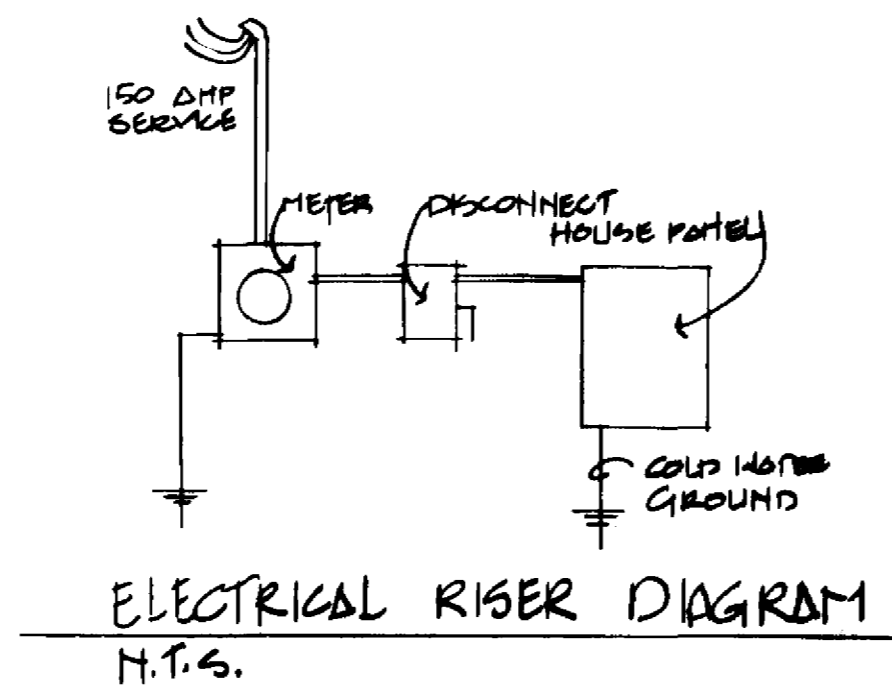


These drawings and specifications are experimental in nature and the energy performance of the design has not been tested or evaluated in actual construction. Also note that these homes were designed for use only in the State of Florida and may be more appropriate for use in some climatic regions within the state than others.

The Florida Solar Energy Center, and the Designer, Architects, Judges, Plans Designers, and Artists involved in developing these drawings and specifications (hereinafter referred to "FSEC/Contractors") make no statement, representation, claim or warranty, whether express, implied or statutory with respect to these plans and specifications. Any implied warranties of merchantability or fitness for a particular purpose are hereby disclaimed.

FSEC/Contractors assume no liability for, and by its use Purchaser hereby releases FSEC/Contractors from all liability for, damages, losses or injury, whether direct, indirect, consequential or incidental, including, but not limited to personal injury, death and damage to property, whether or not due to or caused by FSEC/Contractors negligence, that may arise from or be connected with uses of these drawings and specifications. FSEC/Contractor does not authorize any person, whether employees or agents of FSEC/Contractor or otherwise, to make any representation or warranty or to assume any liability with respect to these drawings and specifications.





① ELECT. AND PLUMB. PLAN
② SCALE 1/4" = 1'-0"

- GENERAL NOTES:**
1. VERIFY SERVICE ENTRY POINTS & METER LOCATIONS W/ LOCAL UTILITY CO.
 2. BATH VENT/LIGHT: TIMER SWITCH ON VENT, LIGHT SWITCHED SEPARATELY.

These drawings and specifications are experimental in nature and the energy performance of the design has not been tested or evaluated in actual construction. Also note that these homes were designed for use only in the State of Florida and may be more appropriate for use in some climatic regions within the state than others.

The Florida Solar Energy Center, and the Designer, Architects, Judges, Plans Designers, and Artists involved in developing these drawings and specifications (hereinafter referred to "FSEC/Contractors") make no statement, representation, claim or warranty, whether express, implied or statutory with respect to these plans and specifications. Any implied warranties of merchantability or fitness for a particular purpose are hereby disclaimed.

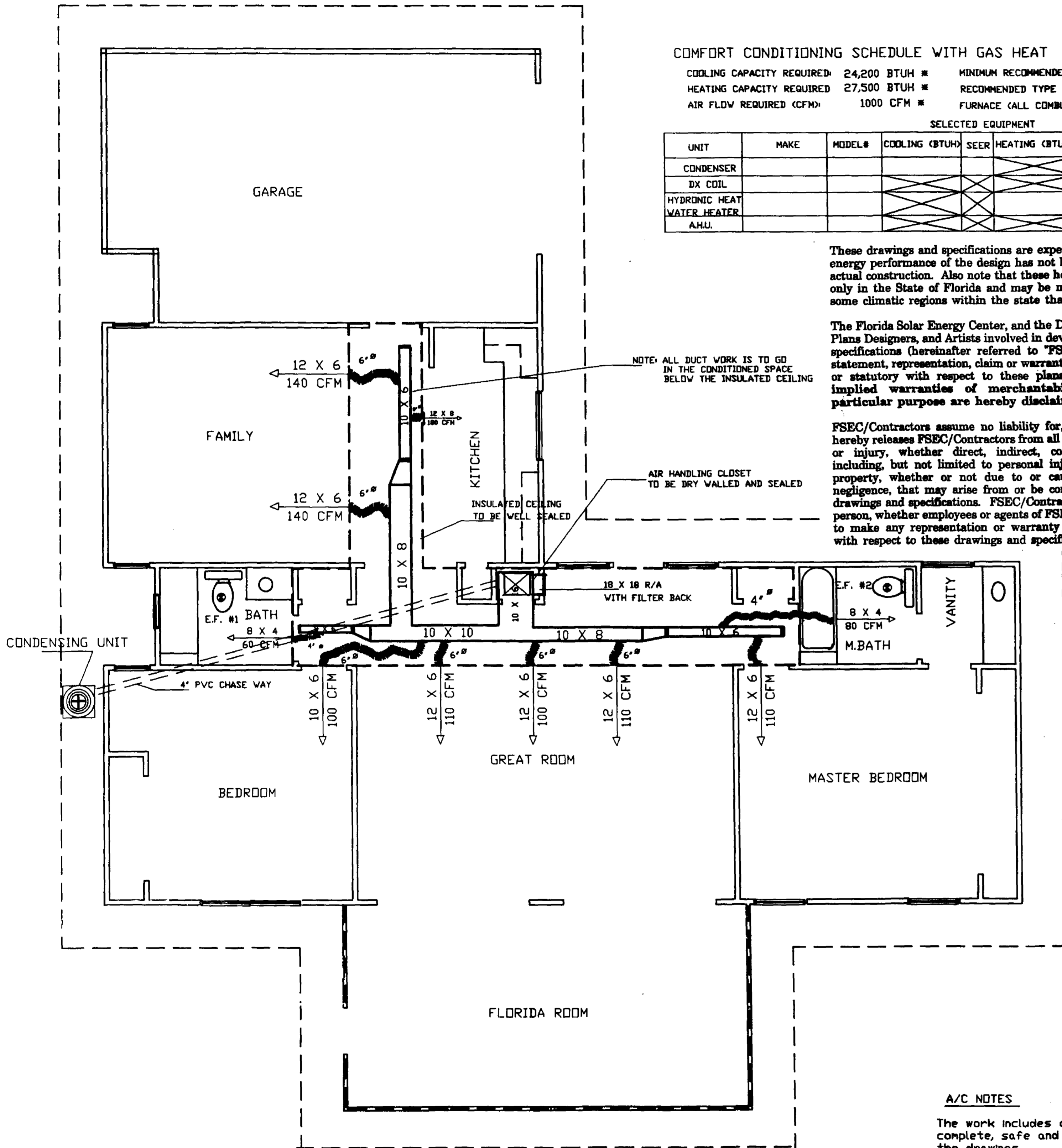
FSEC/Contractors assume no liability for, and by its use Purchaser hereby releases FSEC/Contractors from all liability for, damages, losses or injury, whether direct, indirect, consequential or incidental, including, but not limited to personal injury, death and damage to property, whether or not due to or caused by FSEC/Contractors negligence, that may arise from or be connected with uses of these drawings and specifications. FSEC/Contractor does not authorize any person, whether employees or agents of FSEC/Contractor or otherwise, to make any representation or warranty or to assume any liability with respect to these drawings and specifications.

1989 ENERGY-EFFICIENT FLORIDA HOME
FLORIDA SOLAR ENERGY CENTER

ELECTRICAL AND
PLUMBING PLAN

SHEET 7
5
OF 6 SHEETS

COPYRIGHT 1989 FLORIDA SOLAR ENERGY CENTER



COMFORT CONDITIONING SCHEDULE WITH GAS HEAT

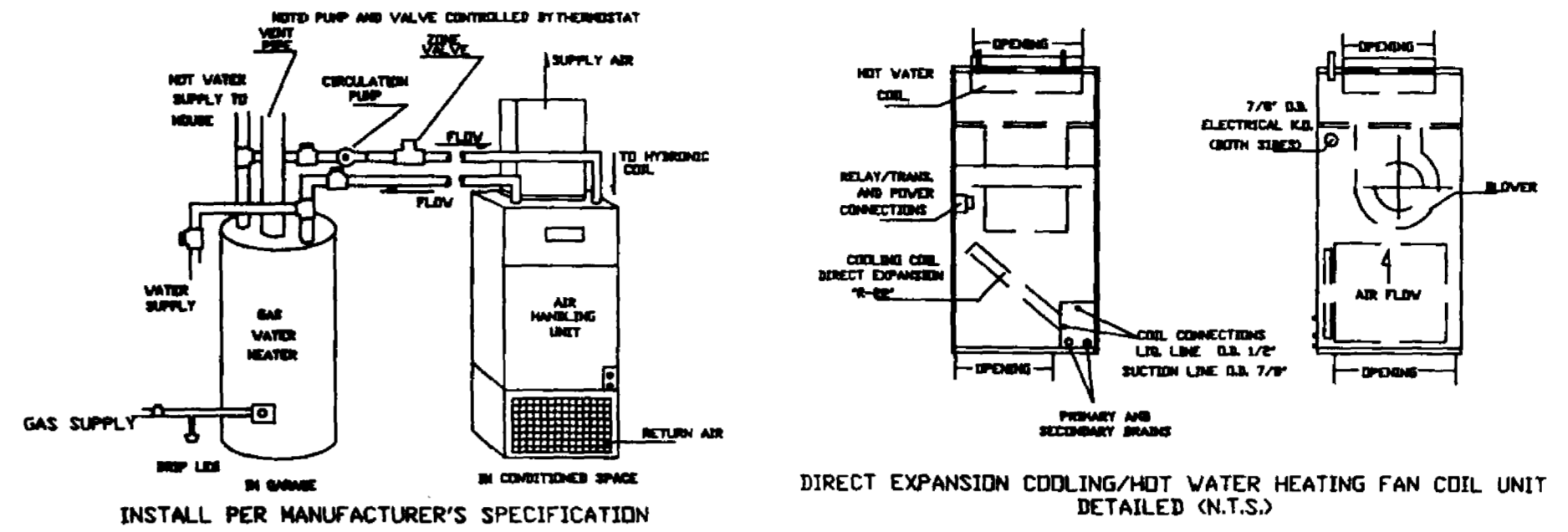
COOLING CAPACITY REQUIRED: 24,200 BTUH * MINIMUM RECOMMENDED SEER: 11.0
 HEATING CAPACITY REQUIRED 27,500 BTUH * RECOMMENDED TYPE OF EQUIPMENT: GAS HYDRONIC
 AIR FLDW REQUIRED (CFM): 1000 CFM * FURNACE (ALL COMBUSTION IS AT WATER HEATER)

SELECTED EQUIPMENT							
UNIT	MAKE	MODEL#	COOLING (BTUH)	SEER	HEATING (BTUH)	RECOVERY EFF.	CFM
CONDENSER							
DX COIL							
HYDRONIC HEAT WATER HEATER							
A.H.U.							

These drawings and specifications are experimental in nature and the energy performance of the design has not been tested or evaluated in actual construction. Also note that these homes were designed for use only in the State of Florida and may be more appropriate for use in some climatic regions within the state than others.

The Florida Solar Energy Center, and the Designer, Architects, Judges, Plans Designers, and Artists involved in developing these drawings and specifications (hereinafter referred to "FSEC/Contractors") make no statement, representation, claim or warranty, whether express, implied or statutory with respect to these plans and specifications. Any implied warranties of merchantability or fitness for a particular purpose are hereby disclaimed.

FSEC/Contractors assume no liability for, and by its use Purchaser hereby releases FSEC/Contractors from all liability for, damages, losses or injury, whether direct, indirect, consequential or incidental, including, but not limited to personal injury, death and damage to property, whether or not due to or caused by FSEC/Contractors negligence, that may arise from or be connected with uses of these drawings and specifications. FSEC/Contractor does not authorize any person, whether employees or agents of FSEC/Contractor or otherwise, to make any representation or warranty or to assume any liability with respect to these drawings and specifications.



COMFORT CONDITIONING SCHEDULE WITH ALL ELECTRICAL UTILITIES

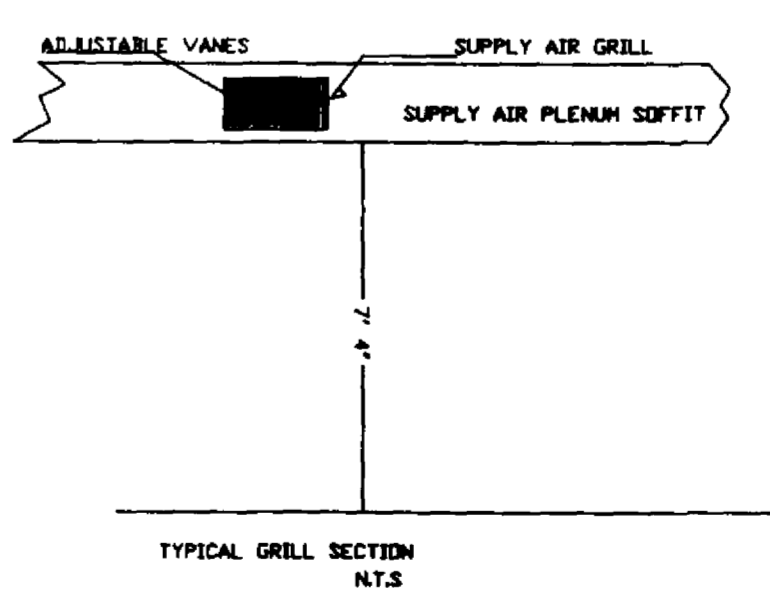
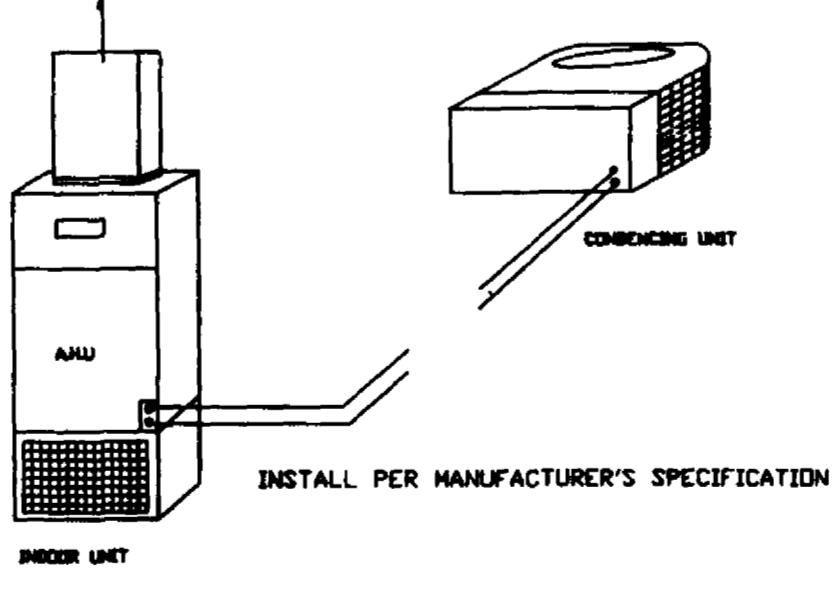
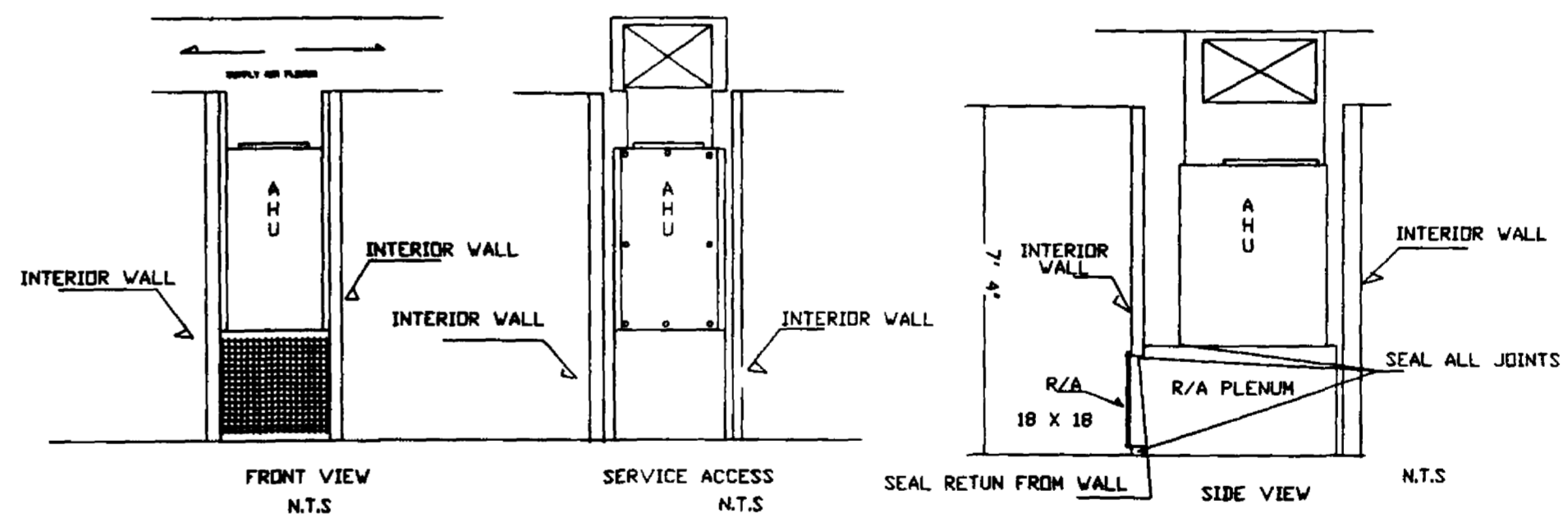
COOLING CAPACITY REQUIRED: 24,200 BTUH * MINIMUM RECOMMENDED SEER: 11.0
 HEATING CAPACITY REQUIRED 27,500 BTUH * TYPE: HEAT PUMP MINIMUM
 AIR FLOW REQUIRED (CFM): 1000 CFM * RECOMMENDED HSPF: 8.0

SELECTED EQUIPMENT							
UNIT	MAKE	MODEL#	COOLING (BTUH)	SEER	HSPF	HEATING (BTUH)	AUX HEAT STRIP
CONDENSER							
A.H.U.							

* Based on plans provided by FSEC and quality construction. If plans have been altered, heating cooling and air-flow requirements should be recalculated. The loads were calculated based on a peak summer load temperature of 95° F drybulb and 77° F wetbulb and a winter peak load temperature of 31° F using CARRIER E-20 II sizing computer program.

EXHAUST FAN SCHEDULE

E.F.#	MAKE	SONES	CFM	VOLTS	HZ	PHASE
E.F.# 1 & 2		≤ 2	50	115	60	1



A/C NOTES

The work includes all labor, material and equipment required to provide complete, safe and workable air conditioning and heating system outline in the drawings.
 Grilles shall be adjustable vanes with dampers to control/regulate air flow and shall also be of aluminum construction with a baked white finish.
 Refrigerant piping shall be Soft-Drawn copper tubing with 3/4" armaflox insulation on the suction line.
 Install air cooled system as shown on the drawings or equal with a minimum of five(5) year parts warranty on the compressor.
 Bathroom exhaust fans shall be discharged to the outdoors with a damper and a 30 minute timer.

HVAC DETAILS

NOT TO SCALE

HVAC LAYOUT

1/4"=1'-0"

COPYRIGHT 1988 FLORIDA SOLAR ENERGY CENTER

1989 ENERGY-EFFICIENT FLORIDA HOME
 FLORIDA SOLAR ENERGY CENTER
 MECHANICAL PLAN HVAC BY FSEC
 DESIGNED BY ELVIS C. GUMBO