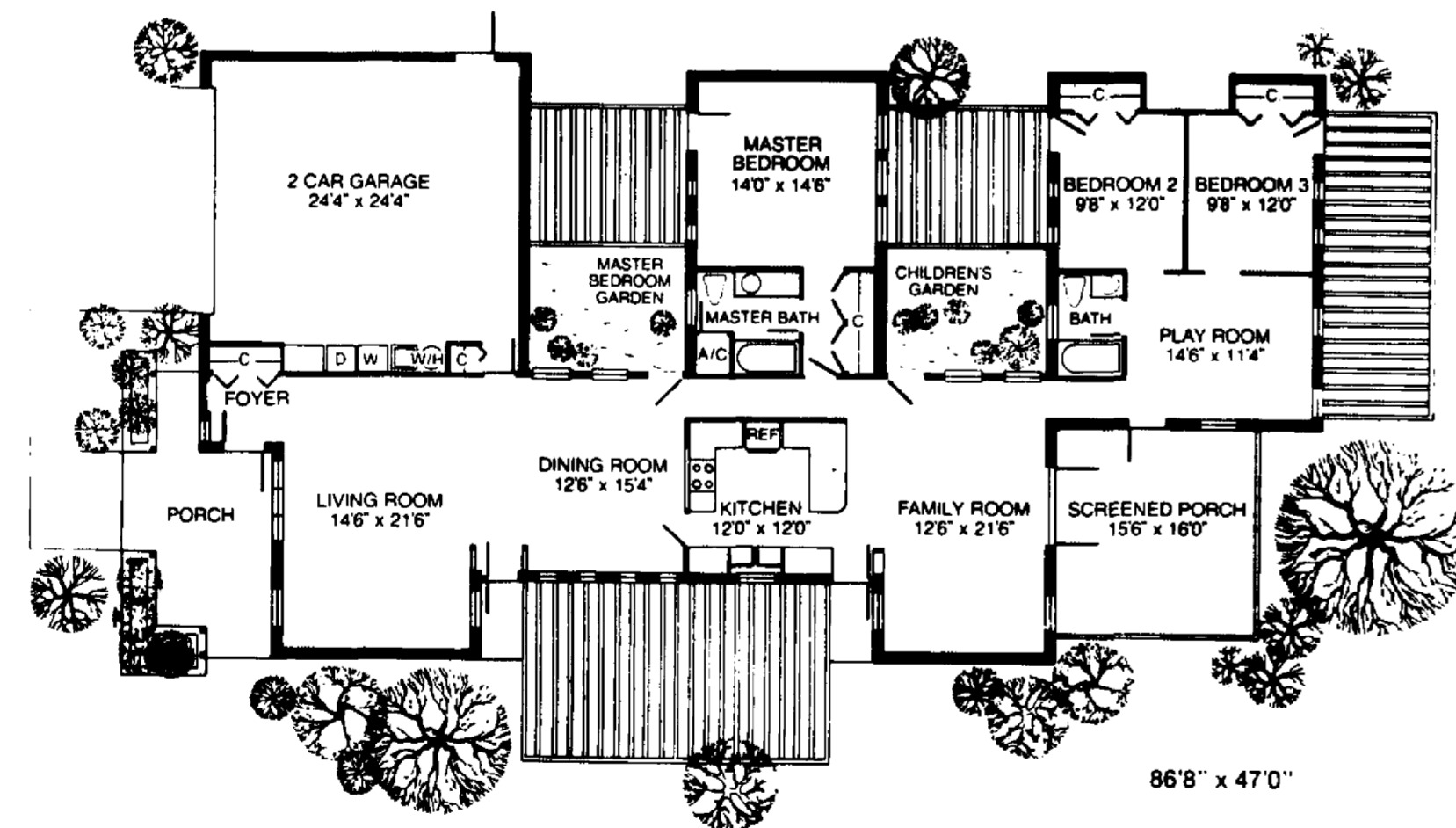
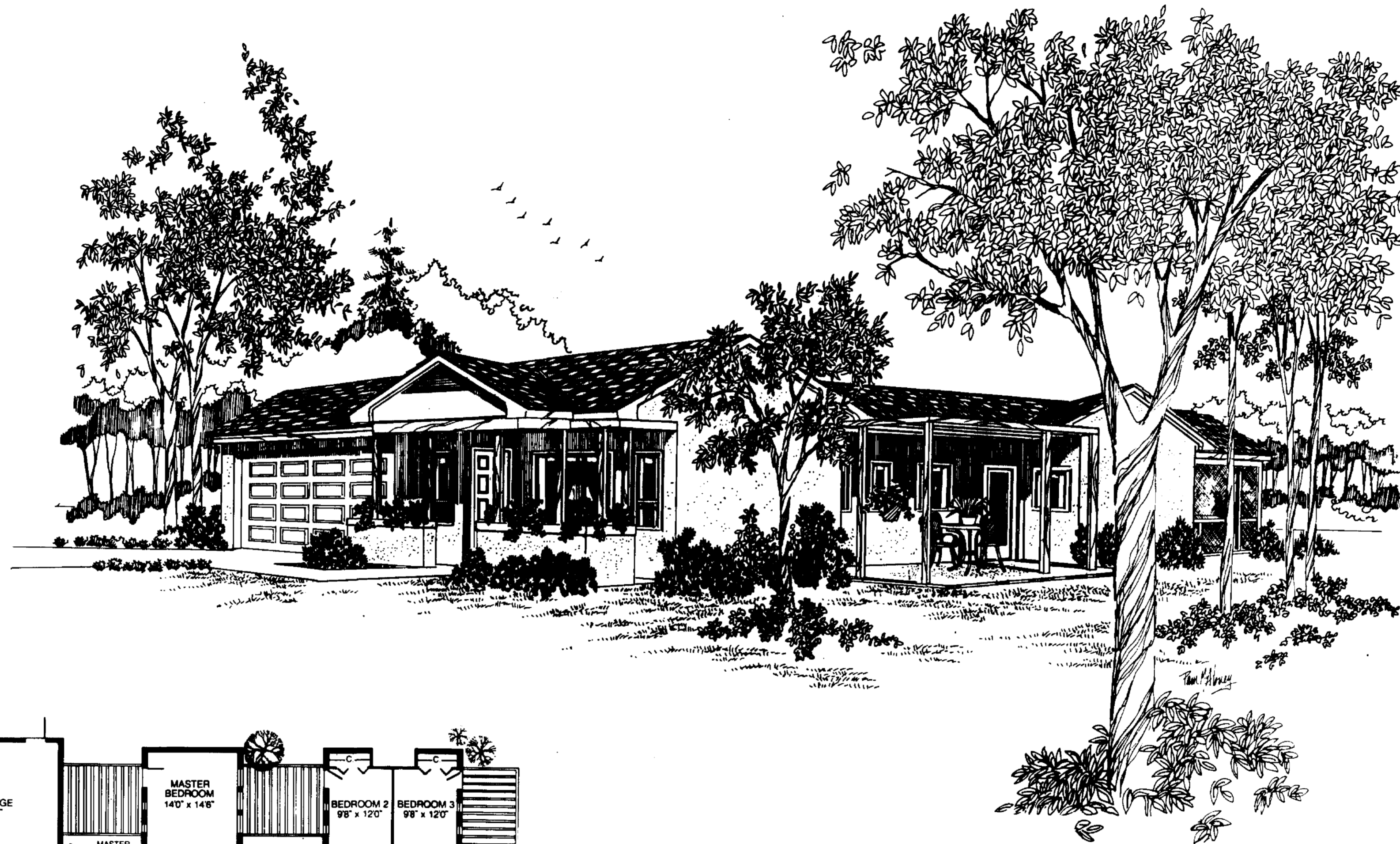


Garden Place

Drawing Index	
Page	Contents
C-1	Cover page
A-1	Sample site plan, wall section, details
A-2	Front & rear elevation, foundation plan
A-3	Side yard elevation, floor plan
A-4	Roof framing plan, garden elevation
A-5	Building sections
E-1	Electrical plan, schedule
M-1	HVAC layout
M-2	HVAC details



These drawings and specifications are experimental in nature and the energy performance of the design has not been tested or evaluated in actual construction. Also note that these homes were designed for use only in the State of Florida and may be more appropriate for use in some climatic regions within the state than others.

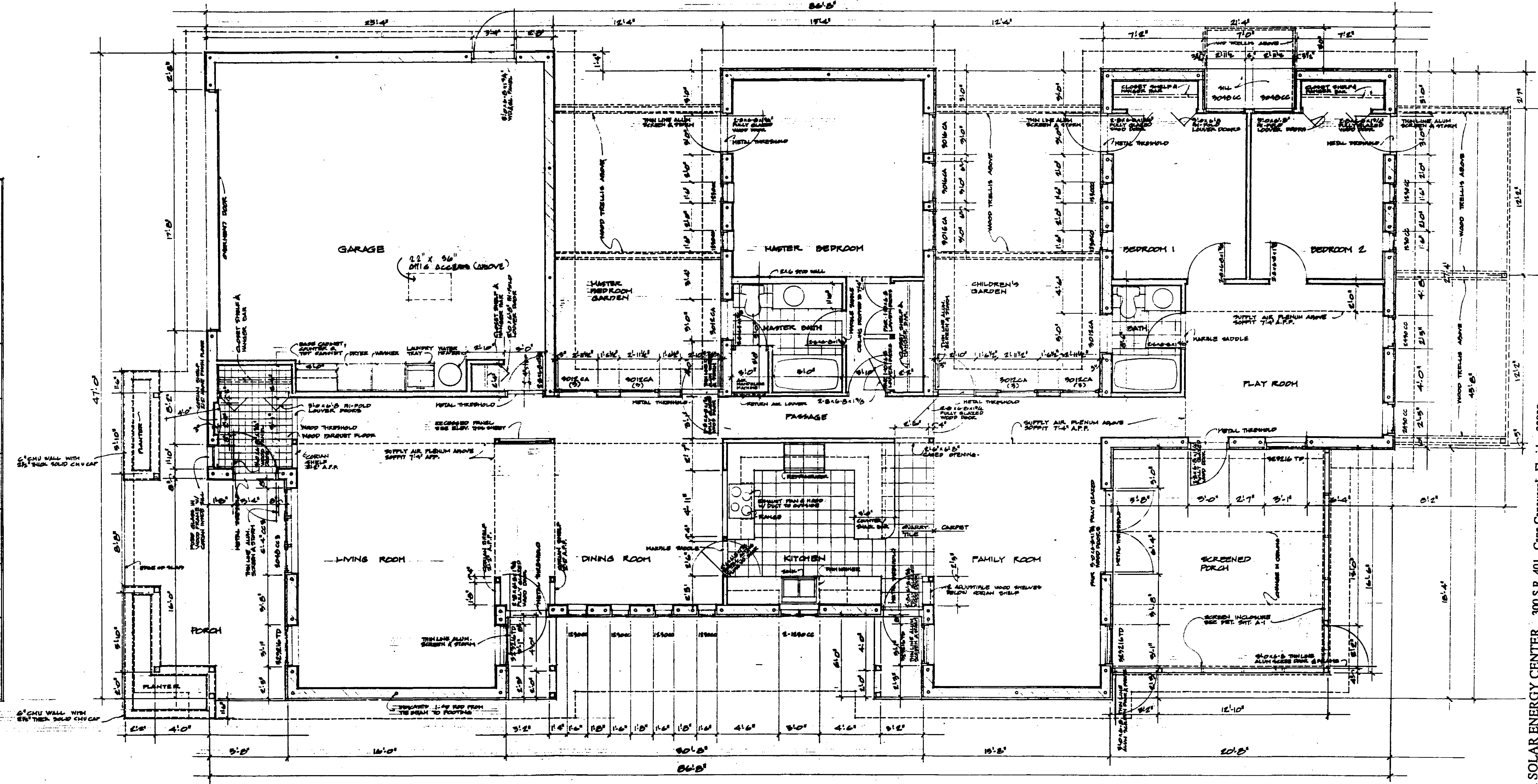
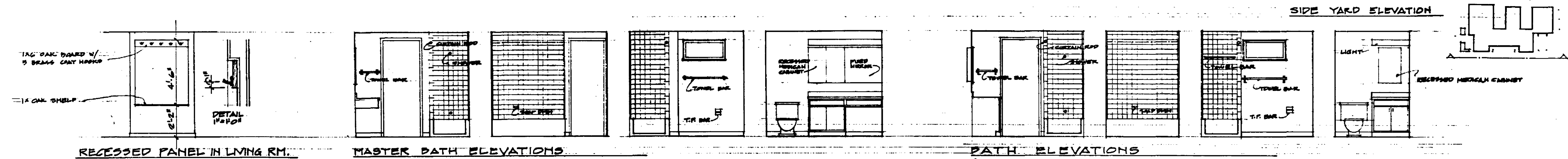
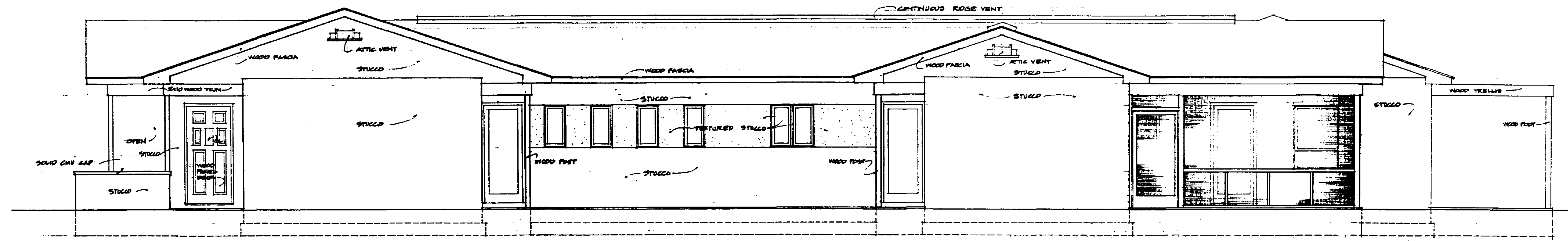
The Florida Solar Energy Center, and the Designer, Architects, Judges, Plans Designers, and Artists involved in developing these drawings and specifications (hereinafter referred to "FSEC/Contractors") make no statement, representation, claim or warranty, whether express, implied or statutory with respect to these plans and specifications. Any implied warranties of merchantability or fitness for a particular purpose are hereby disclaimed.

FSEC/Contractors assume no liability for, and by its use Purchaser hereby releases FSEC/Contractors from all liability for, damages, losses or injury, whether direct, indirect, consequential or incidental, including, but not limited to personal injury, death and damage to property, whether or not due to or caused by FSEC/Contractors negligence, that may arise from or be connected with use of these drawings and specifications. FSEC/Contractor does not authorize any person, whether employees or agents of FSEC/Contractor or otherwise, to make any representation or warranty or to assume any liability with respect to these drawings and specifications.

These drawings and specifications are experimental in nature and the energy performance of the design has not been tested or evaluated in actual construction. Also note that these homes were designed for use only in the State of Florida and may be more appropriate for use in some climatic regions within the state than others.

The Florida Solar Energy Center, and the Designer, Architects, Judges, Plans Designers, and Artists involved in developing these drawings and specifications (hereinafter referred to "FSEC/Contractors") make no statement, representation, claim or warranty, whether express, implied or statutory with respect to these plans and specifications. Any implied warranties of merchantability or fitness for a particular purpose are hereby disclaimed.

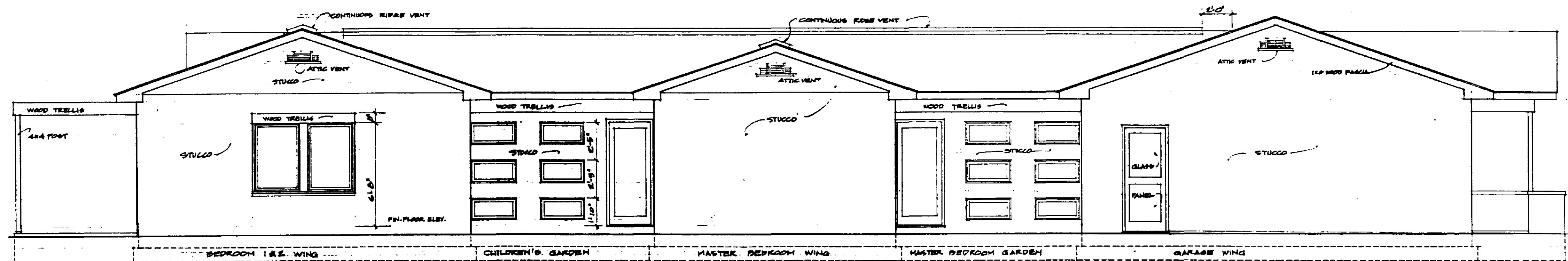
FSEC/Contractors assume no liability for, and by its use Purchaser hereby releases FSEC/Contractors from all liability for, damages, losses or injury whether direct, indirect, consequential or incidental, including, but not limited to personal injury, death and damage to property, whether or not due to or caused by FSEC/Contractors negligence, that may arise from or be connected with use of these drawings and specifications. FSEC/Contractor does not authorize any person, whether employees or agents of FSEC/Contractor or otherwise, to make any representation or warranty or to assume any liability with respect to these drawings and specifications.



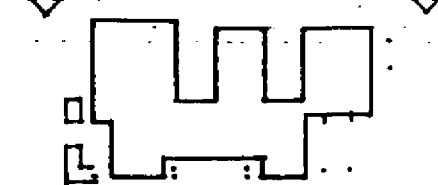
ROOM	FINISH SCHEDULE	REMARKS
ROOF TILES	CEILING HEIGHT	
ENTRANCE	WOOD	
LIVING ROOM	CARPET	
DINING ROOM	CARPET	
KITCHEN	CARPET	
FAMILY ROOM	CARPET	
PLAY ROOM	CARPET	
PREP ROOM	CARPET	
BATH	CARPET	
DRESSING AREA	CARPET	
MASTER BEDROOM	CARPET	
MASTER BATH	CARPET	
CHILDREN'S BEDROOM	CARPET	
CHILDREN'S BATH	CARPET	
SCREENED PORCH	CONCRETE	

NOTE: WINDOW NUMBER REFER TO PELLA WINDOWS BY PELLA WINDOW CO./PELLA
 ALL INTERIOR DOORS PUSH WOOD HOLLOW CORE UNLESS OTHERWISE NOTED

SIDE YARD ELEVATION & FLOOR PLAN
 1/4" = 1'0"



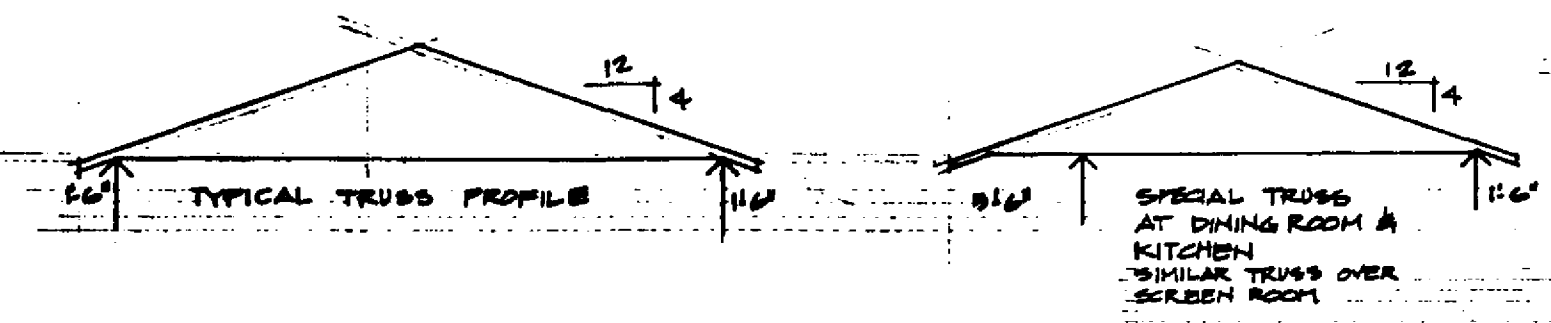
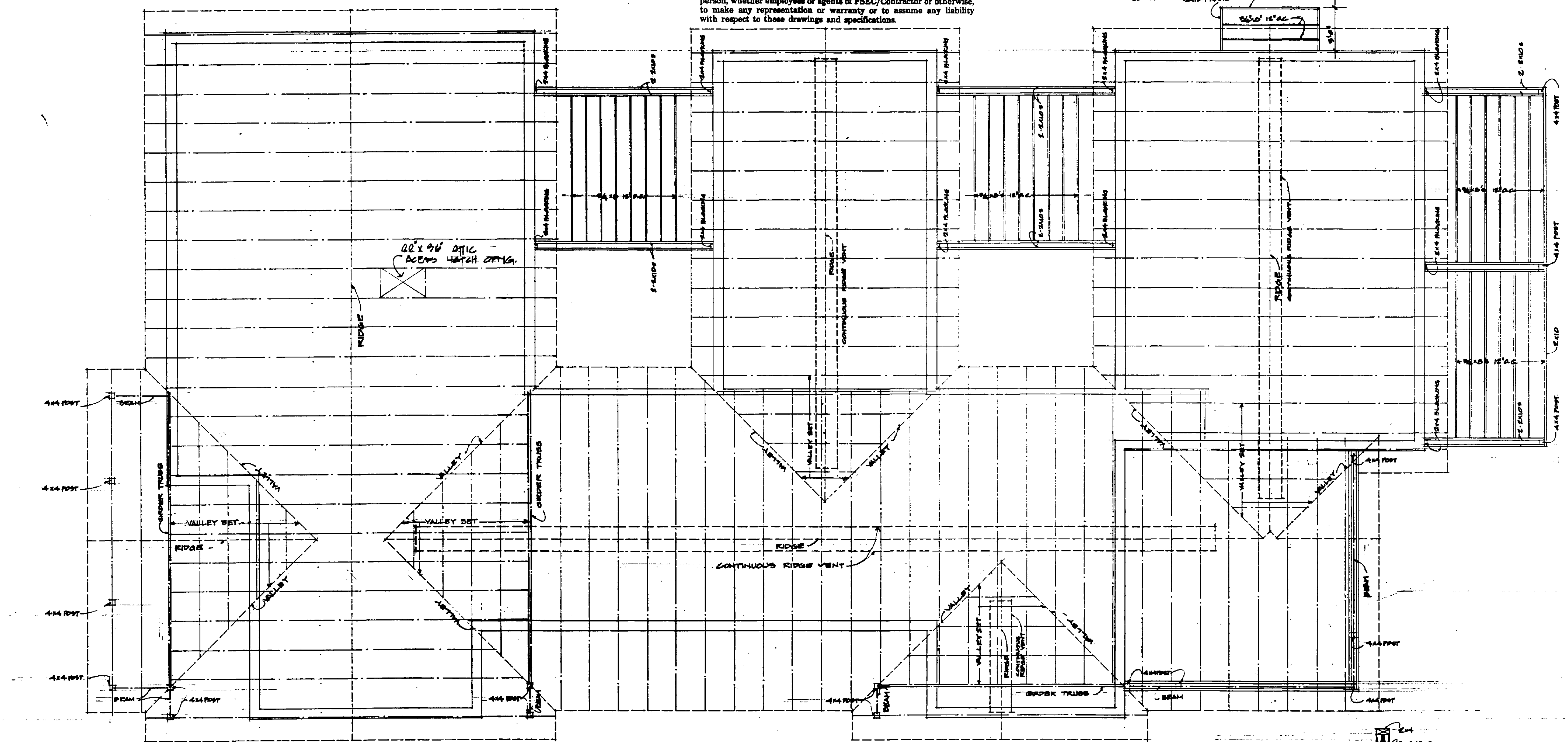
GARDEN ELEVATION



These drawings and specifications are experimental in nature and the energy performance of the design has not been tested or evaluated in actual construction. Also note that these homes were designed for use only in the State of Florida and may be more appropriate for use in some climatic regions within the state than others.

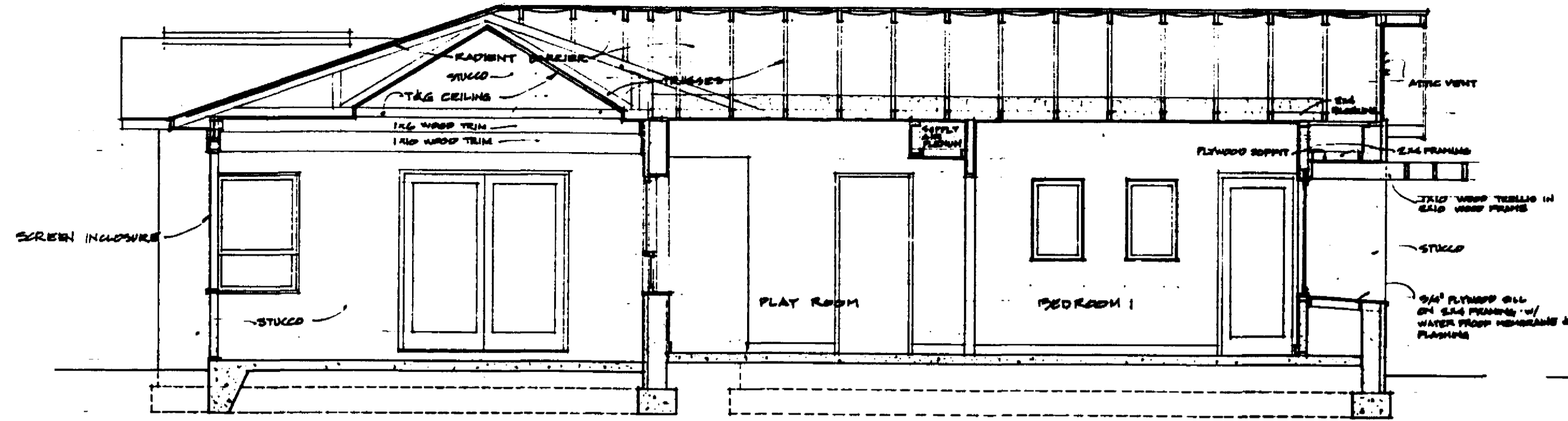
The Florida Solar Energy Center, and the Designer, Architects, Judges, Plans Designers, and Artists involved in developing these drawings and specifications (hereinafter referred to "FSEC/Contractors") make no statement, representation, claim or warranty, whether express, implied or statutory with respect to these plans and specifications. Any implied warranties of merchantability or fitness for a particular purpose are hereby disclaimed.

FSEC/Contractors assume no liability for, and by its use Purchaser hereby releases FSEC/Contractors from all liability for, damages, losses or injury, whether direct, indirect, consequential or incidental, including, but not limited to personal injury, death and damage to property, whether or not due to or caused by FSEC/Contractors negligence, that may arise from or be connected with uses of these drawings and specifications. FSEC/Contractor does not authorize any person, whether employees or agents of FSEC/Contractor or otherwise, to make any representation or warranty or to assume any liability with respect to these drawings and specifications.

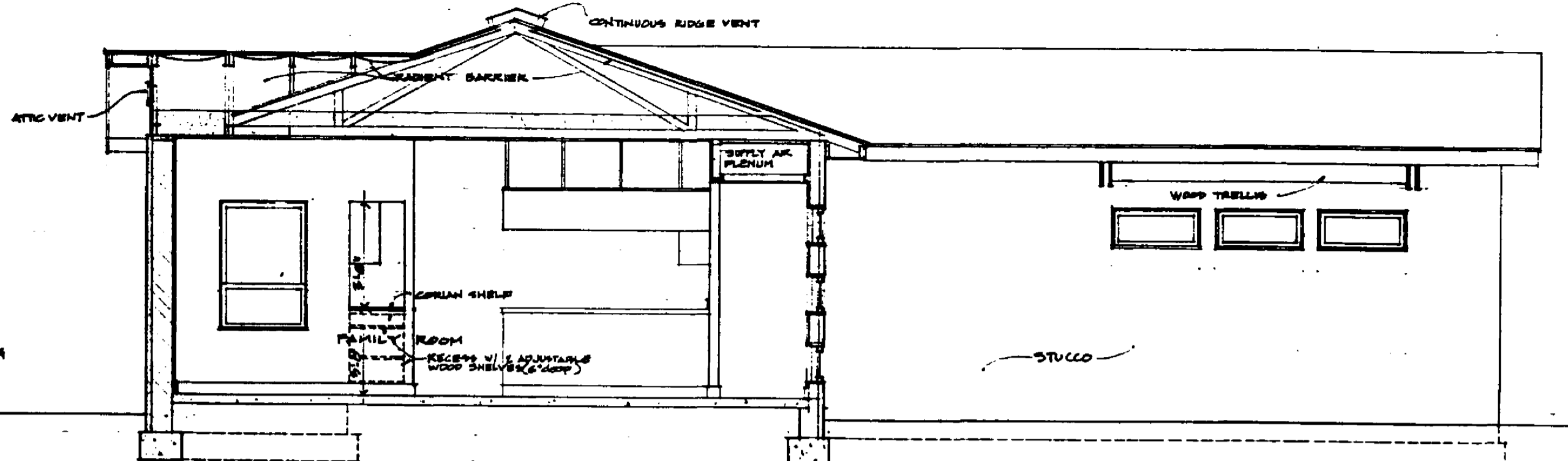


- ALL FRAMING PRE-FAB, PRE-ENGINEERED WOOD TRUSSES @ C.H.O.C.
- VALLEY SETS BY TRUSS MANUFACTURER

ROOF FRAMING PLAN & GARDEN ELEVATION
1/4" = 1'-0"



SECTION G

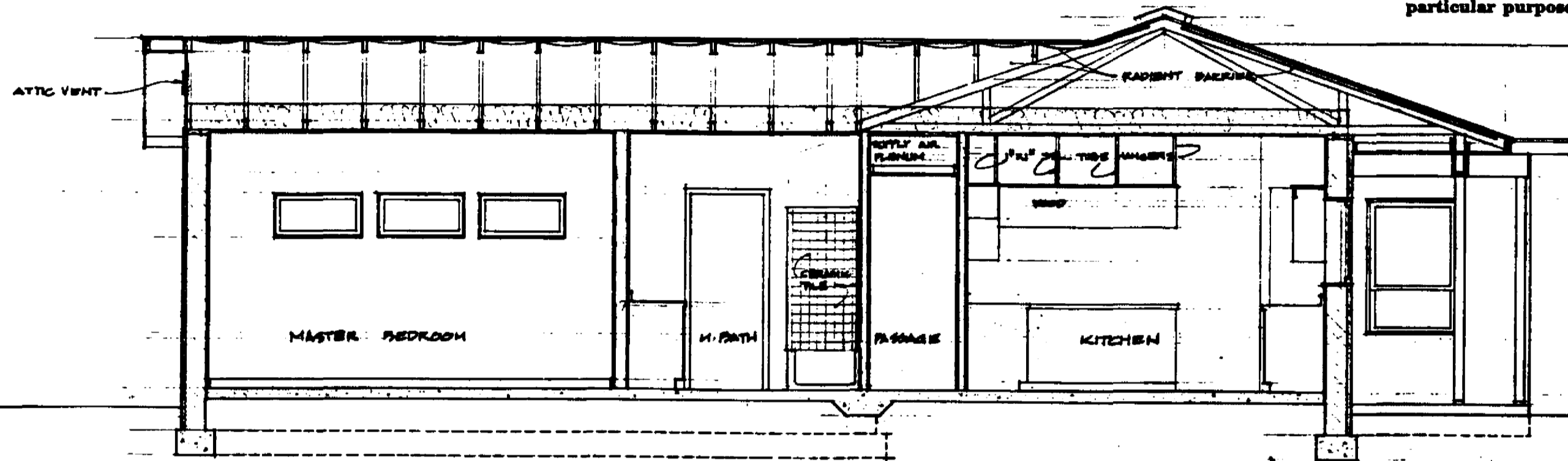


SECTION F

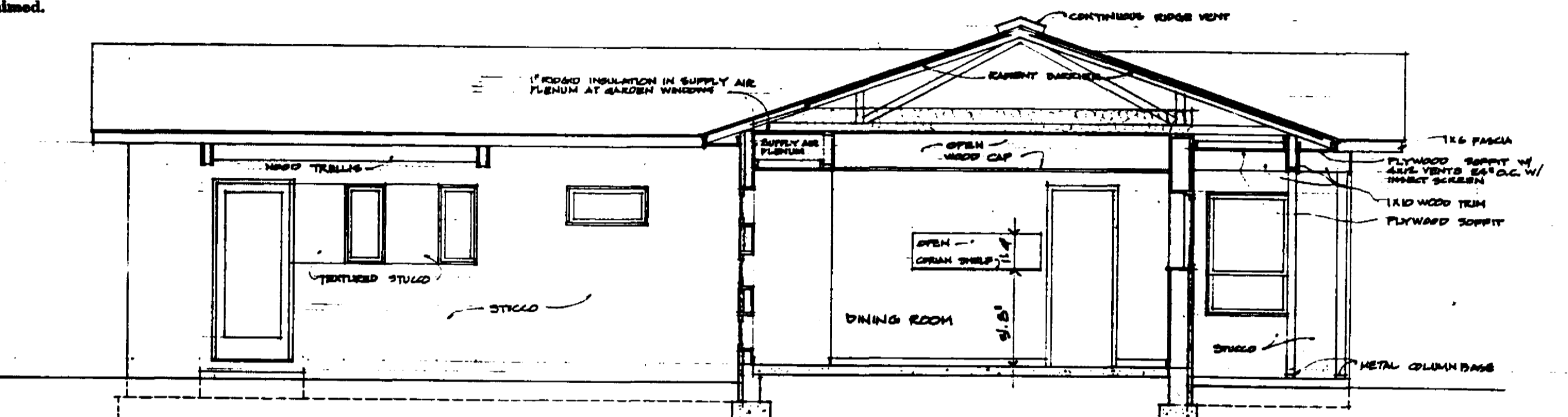
These drawings and specifications are experimental in nature and the energy performance of the design has not been tested or evaluated in actual construction. Also note that these homes were designed for use only in the State of Florida and may be more appropriate for use in some climatic regions within the state than others.

The Florida Solar Energy Center, and the Designer, Architects, Judges, Plans Designers, and Artists involved in developing these drawings and specifications (hereinafter referred to as "FSEC/Contractors") make no statement, representation, claim or warranty, whether express, implied or statutory with respect to these plans and specifications. Any implied warranties of merchantability or fitness for a particular purpose are hereby disclaimed.

FSEC/Contractors assumes no liability for, and by its use Purchaser hereby releases FSEC/Contractors from all liability for, damages, losses or injury, whether direct, indirect, consequential or incidental, including, but not limited to personal injury, death and damage to property, whether or not due to or caused by FSEC/Contractors negligence, that may arise from or be connected with uses of these drawings and specifications. FSEC/Contractor does not authorize any person, whether employees or agents of FSEC/Contractor or otherwise, to make any representation or warranty or to assume any liability with respect to these drawings and specifications.

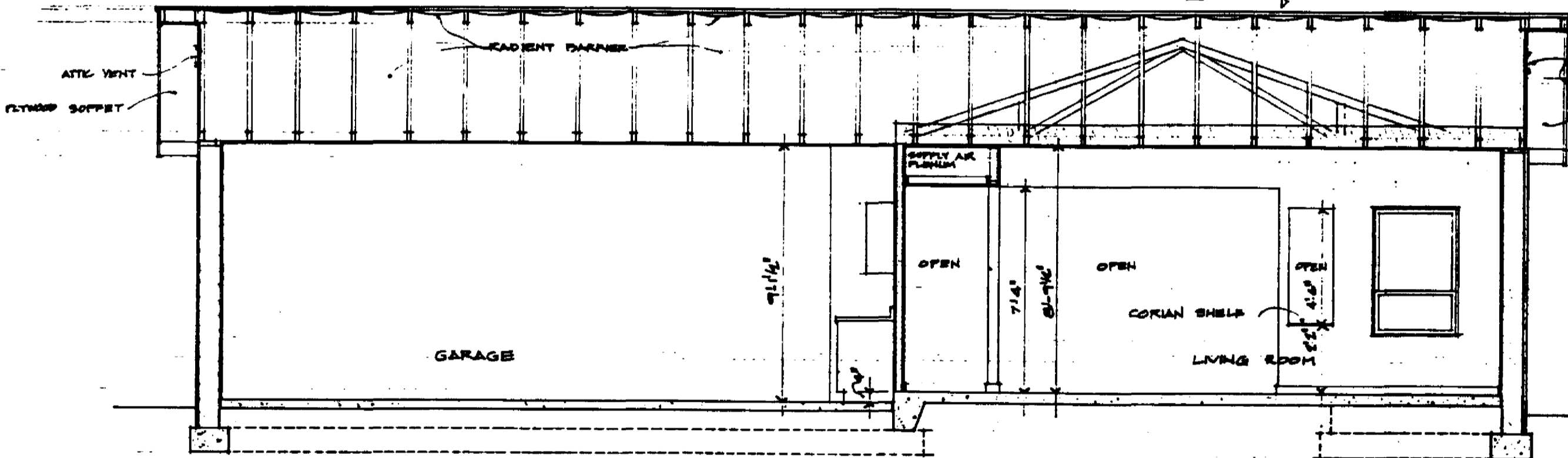


SECTION E

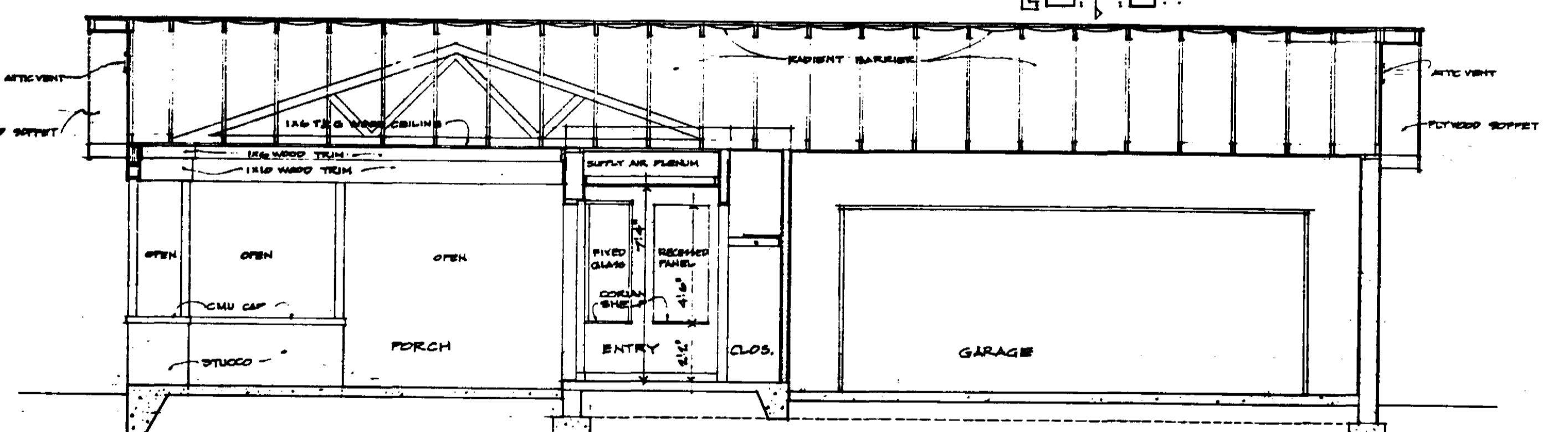


SECTION D

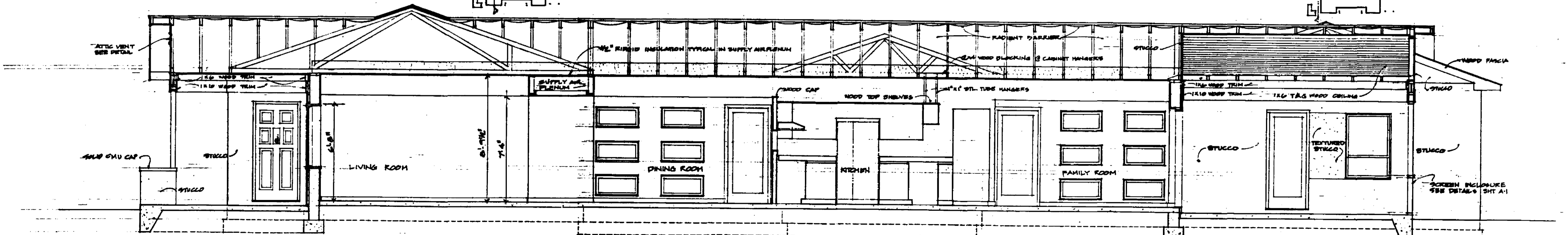
SIDE SLAB



SECTION C

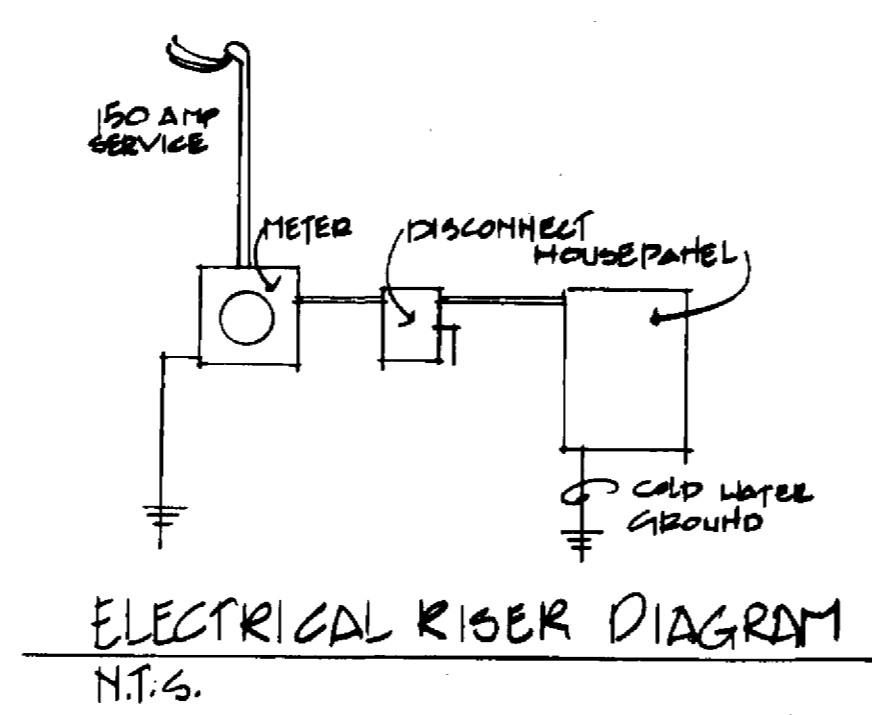


SECTION B



SECTION A

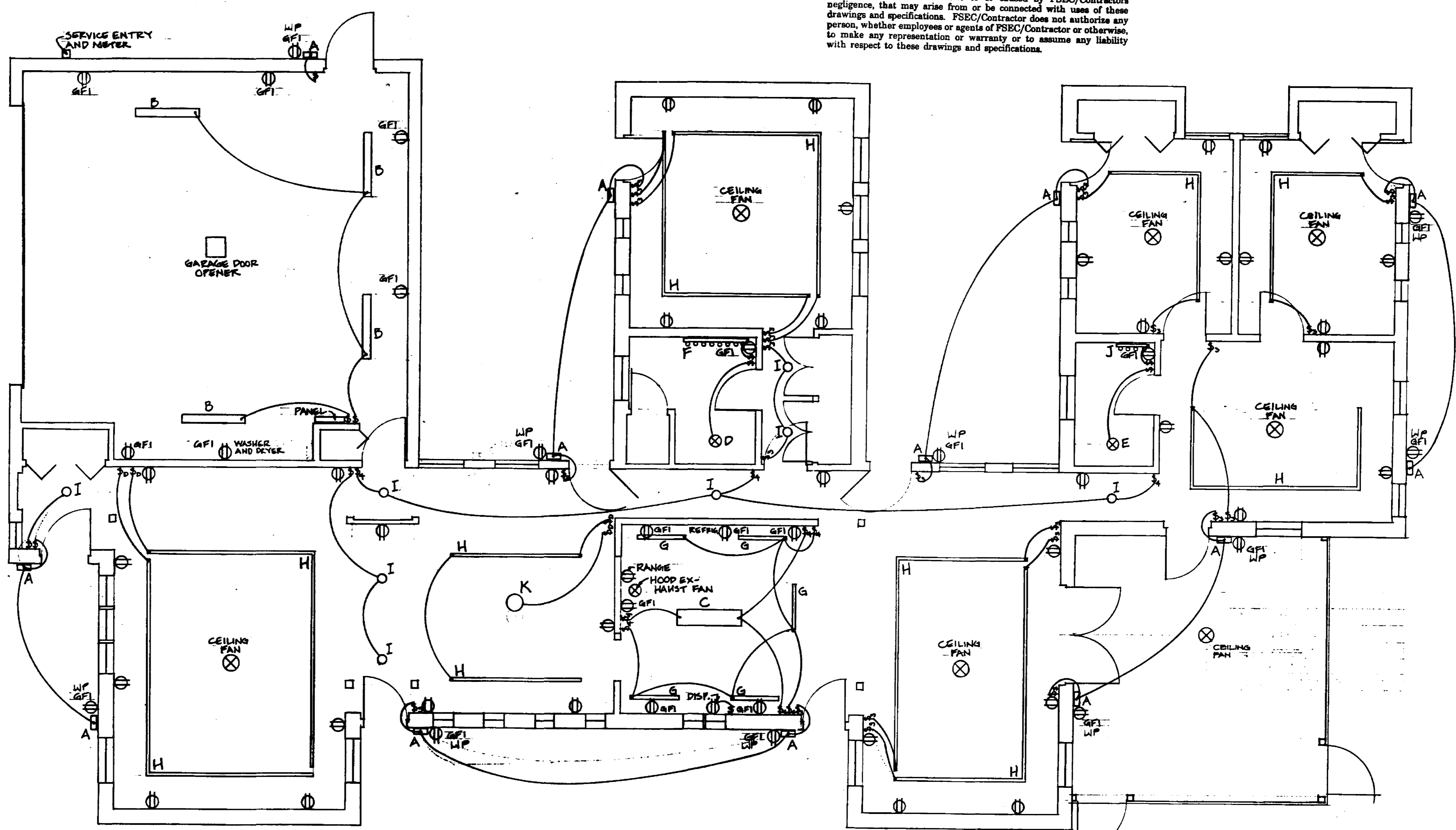
BUILDING SECTIONS A thru G
1/4" = 1'-0"



These drawings and specifications are experimental in nature and the energy performance of the design has not been tested or evaluated in actual construction. Also note that these homes were designed for use only in the State of Florida and may be more appropriate for use in some climatic regions within the state than others.

The Florida Solar Energy Center, and the Designer, Architects, Judges, Plans Designers, and Artists involved in developing these drawings and specifications (hereinafter referred to "FSEC/Contractors") make no statement, representation, claim or warranty, whether express, implied or statutory with respect to these plans and specifications. Any implied warranties of merchantability or fitness for a particular purpose are hereby disclaimed.

FSEC/Contractors assume no liability for, and by its use Purchaser hereby releases FSEC/Contractors from all liability for, damages, losses or injury, whether direct, indirect, consequential or incidental, including, but not limited to personal injury, death and damage to property, whether or not due to or caused by FSEC/Contractors negligence, that may arise from or be connected with uses of these drawings and specifications. FSEC/Contractor does not authorize any person, whether employee or agent of FSEC/Contractor or otherwise, to make any representation or warranty or to assume any liability with respect to these drawings and specifications.



LIGHTING KEY				
QTY.	MOUNTING	STYLE	LAMP/S	
A	13	WALL-EXTERIOR	DISK, LANTERN, OR GLOBE	1-60W INC.
B	4	CEILING-SURFACE	FLUORESCENT STRIP	2-40W FL.
C	1	CEILING-SURFACE	KITCHEN FLUORESCENT	2-40W FL.
D	1	CEILING-RECESSED	70 CFM EXHAUST FAN W/LIGHT	1-60W INC.
E	1	CEILING-RECESSED	50 CFM EXHAUST FAN W/LIGHT	1-60W INC.
F	1	WALL-SURFACE	4 PT. INCANDESCENT STRIP	8-25W INC.
G	5	UNDER CABINET	CABINET STRIP FLUORESCENT	1-30W FL.
H	VAR.	CEILING-SURFACE	TRACK LIGHTING	VARIES
I	8	CEILING-RECESSED	CAN LIGHTS	1-60W INC.
J	1	WALL-SURFACE	2 PT. INCANDESCENT STRIP	4-25W INC.
K	1	CEILING-SURFACE	CHANDELIER	VARIES

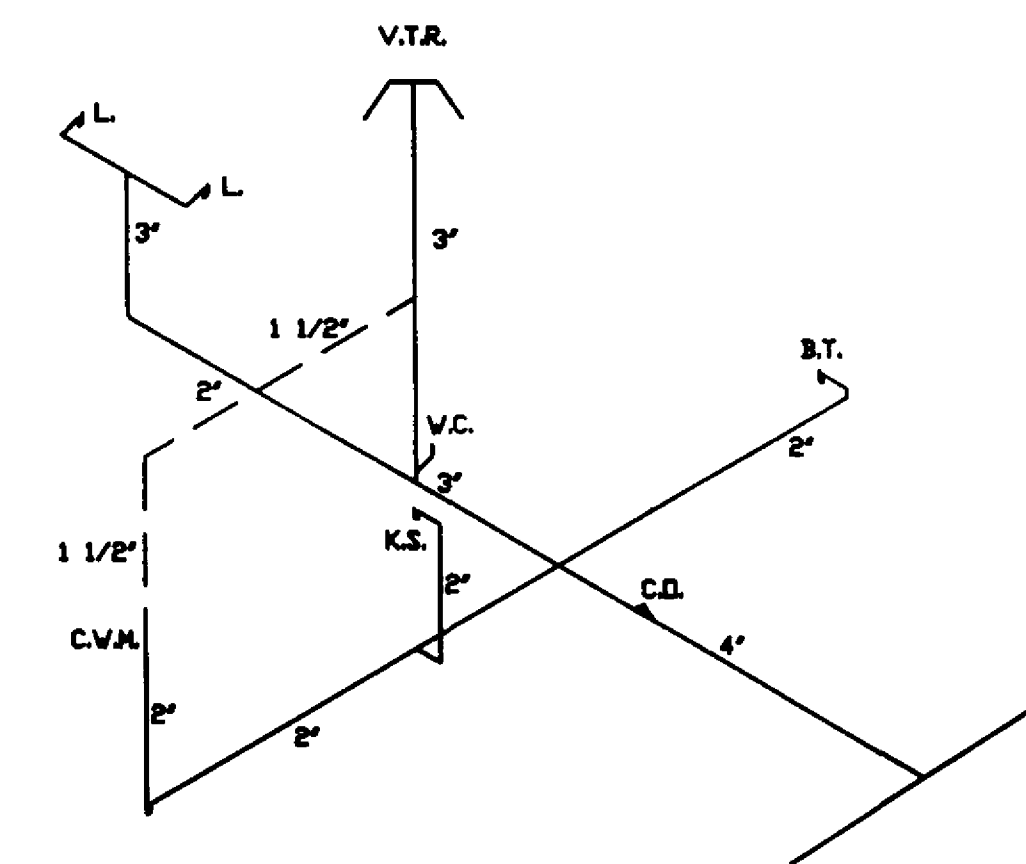
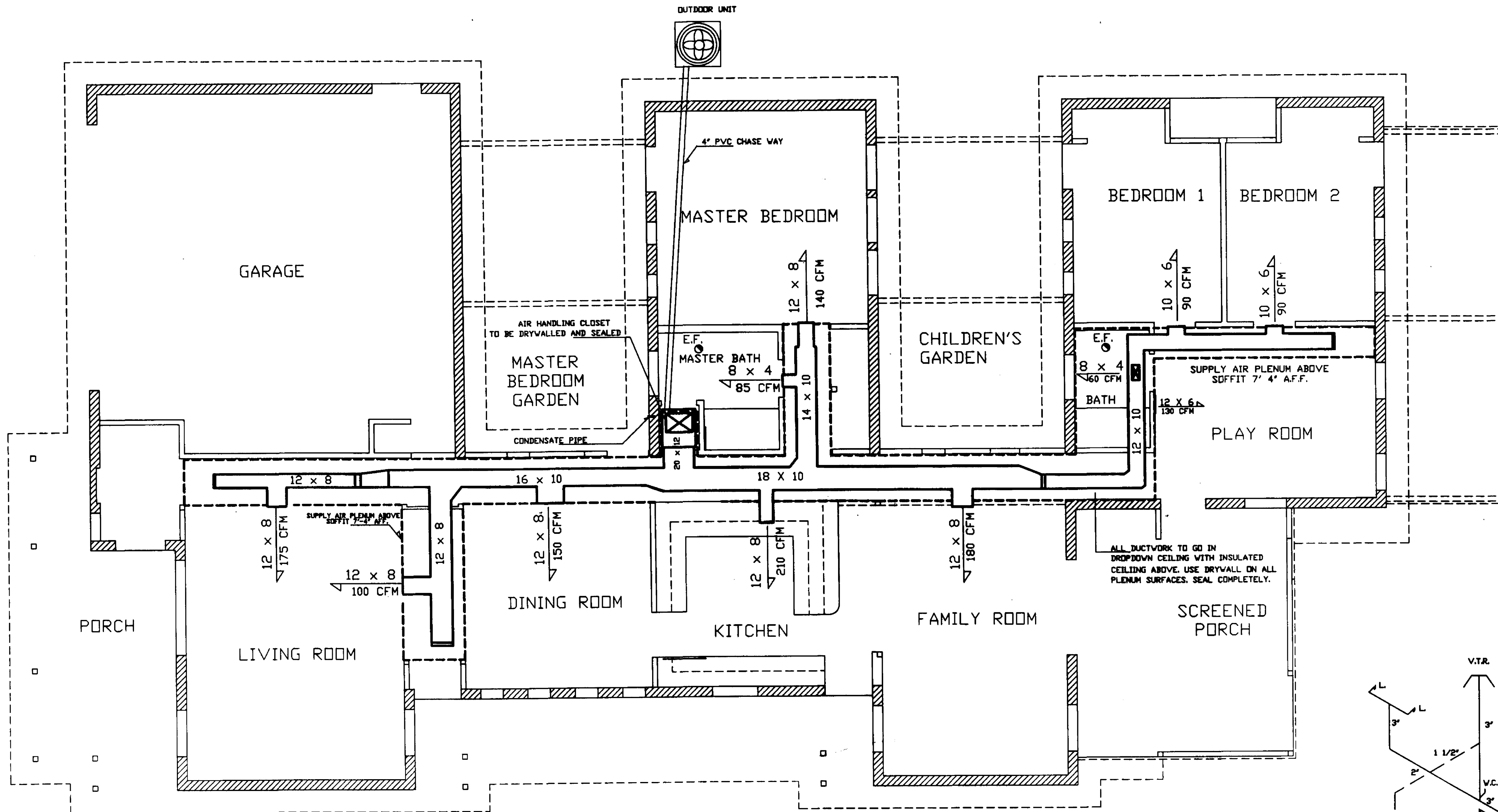
KEY	
⊕	SWITCH
⊕ ₃	3-WAY SWITCH
⊕ ₄	4-WAY SWITCH
⊕ ₂	SWITCH W/ DIMMER
GFI	GROUND FAULT INTERRUPTION

ELECTRICAL PLAN & SCHEDULE

These drawings and specifications are experimental in nature and the energy performance of the design has not been tested or evaluated in actual construction. Also note that these homes were designed for use only in the State of Florida and may be more appropriate for use in some climatic regions within the state than others.

The Florida Solar Energy Center, and the Designer, Architects, Judges, Plans Designers, and Artists involved in developing these drawings and specifications (hereinafter referred to "FSEC/Contractors") make no statement, representation, claim or warranty, whether express, implied or statutory with respect to these plans and specifications. Any implied warranties of merchantability or fitness for a particular purpose are hereby disclaimed.

FSEC/Contractors assume no liability for, and by its use Purchaser hereby releases FSEC/Contractors from all liability for, damages, losses or injury, whether direct, indirect, consequential or incidental, including, but not limited to personal injury, death and damage to property, whether or not due to or caused by FSEC/Contractors negligence, that may arise from or be connected with uses of these drawings and specifications. FSEC/Contractor does not authorize any person, whether employees or agents of FSEC/Contractor or otherwise, to make any representation or warranty or to assume any liability with respect to these drawings and specifications.



PLUMBING DRAINAGE DIAGRAM

A/C NOTES

The work includes all labor, material and equipment required to provide complete, safe and workable air conditioning and heating system outline in the drawings.
 Grilles shall be adjustable vanes with dampers to control/regulate air flow and shall also be of aluminum construction with a baked white finish.
 Refrigerant piping shall be Soft-Drawn copper tubing with 3/4" armaflex insulation on the suction line.
 Install air cooled system as shown on the drawings or equal with a minimum of five(5) year parts warranty on the compressor.
 Bathroom exhaust fans shall be discharged to the outdoors with damper and a 30 minute timer

FLORIDA SOLAR ENERGY CENTER 3000 S.R. 401 Cape Canaveral Florida 32920
1989 ENERGY EFFICIENT FLORIDA HOME COMPETITION
 Winning Entry 2146 Square Feet Orientation Independent Design
 Designed by Richard Pohlman and Fred Morgan HVAC By FSEC (Designed by F.L.VIS. C. GUMBS.)

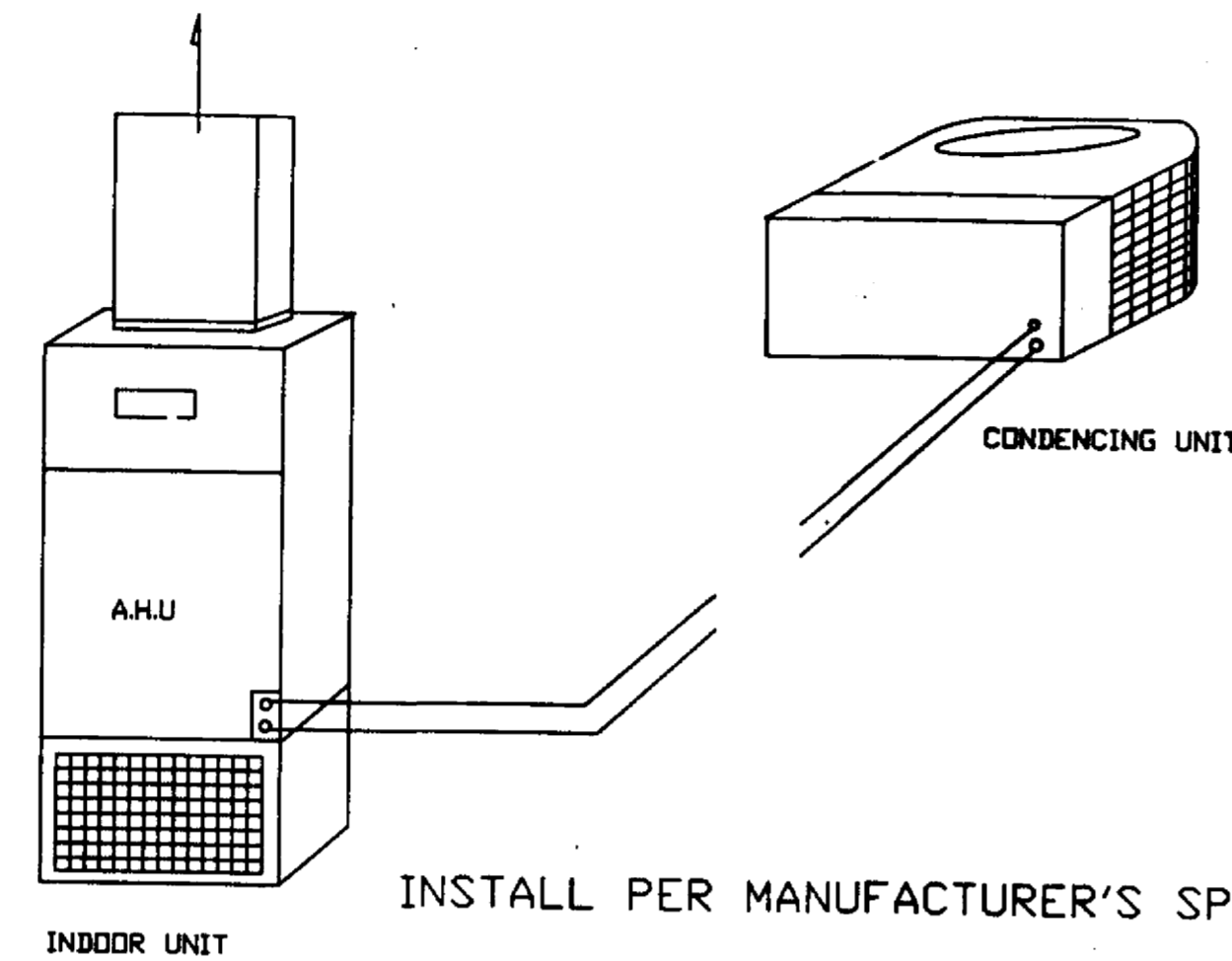
COPYRIGHT 1989 FLORIDA SOLAR ENERGY CENTER

COMFORT CONDITIONING SCHEDULE WITH ALL ELECTRICAL UTILITIES

COOLING CAPACITY REQUIRED: 33,700 BTUH ■ MINIMUM RECOMMENDED SEER: 11.0
 HEATING CAPACITY REQUIRED: 41,200 BTUH ■ TYPE: HEAT PUMP MINIMUM
 AIR FLOW REQUIRED (CFM): 1380 CFM ■ RECOMMENDED HSPF: 8.0

SELECTED EQUIPMENT							
UNIT	MAKE	MODEL#	COOLING (BTUH)	SEER	HSPF	HEATING (BTUH)	AUX HEAT STRIP CFM
CONDENSER							
AHU							

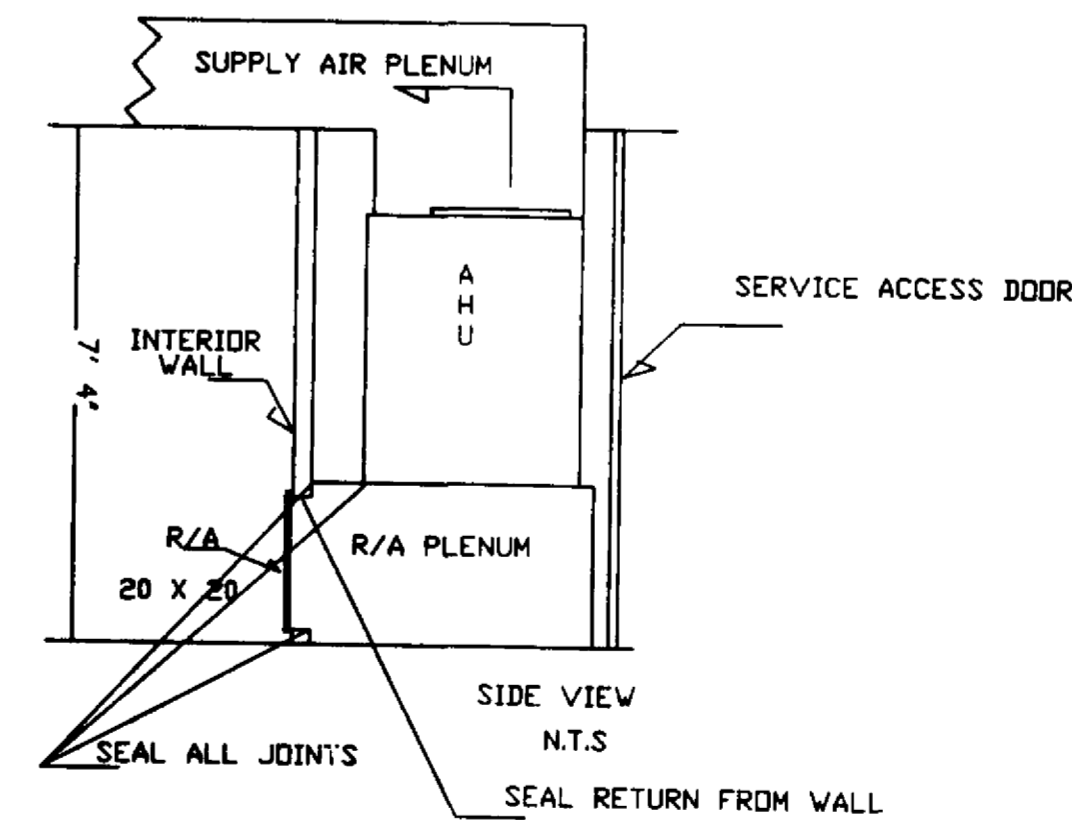
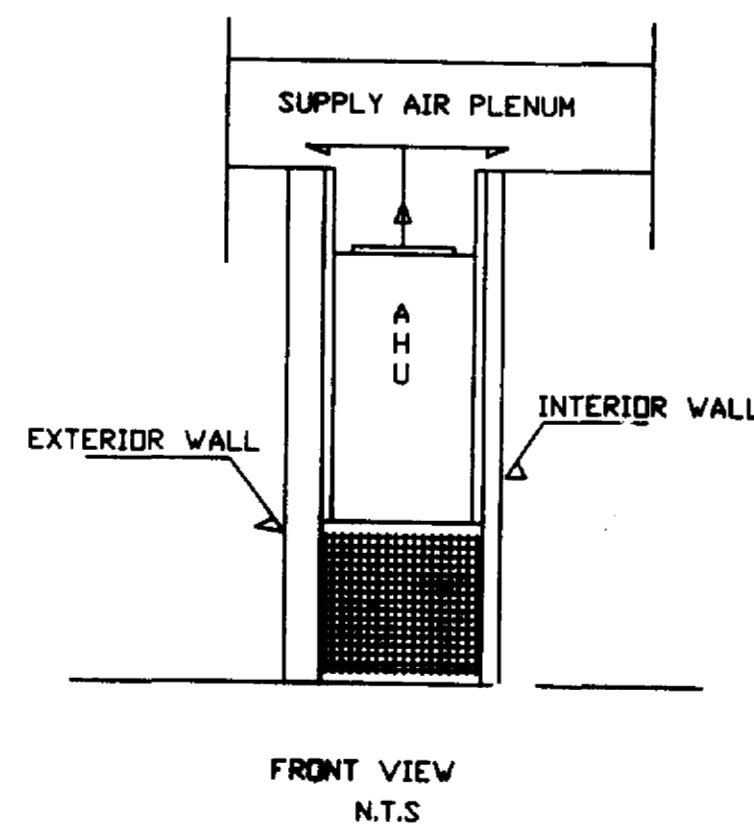
Based on plans provided by FSEC and quality construction. If plans have been altered, heating cooling and air-flow requirements should be recalculated. The loads were calculated based on a peak summer load temperature of 95° F drybulb and 77° F wetbulb and a winter peak load temperature of 31° F using CARRIER E-20 II sizing computer program.



These drawings and specifications are experimental in nature and the energy performance of the design has not been tested or evaluated in actual construction. Also note that these homes were designed for use only in the State of Florida and may be more appropriate for use in some climatic regions within the state than others.

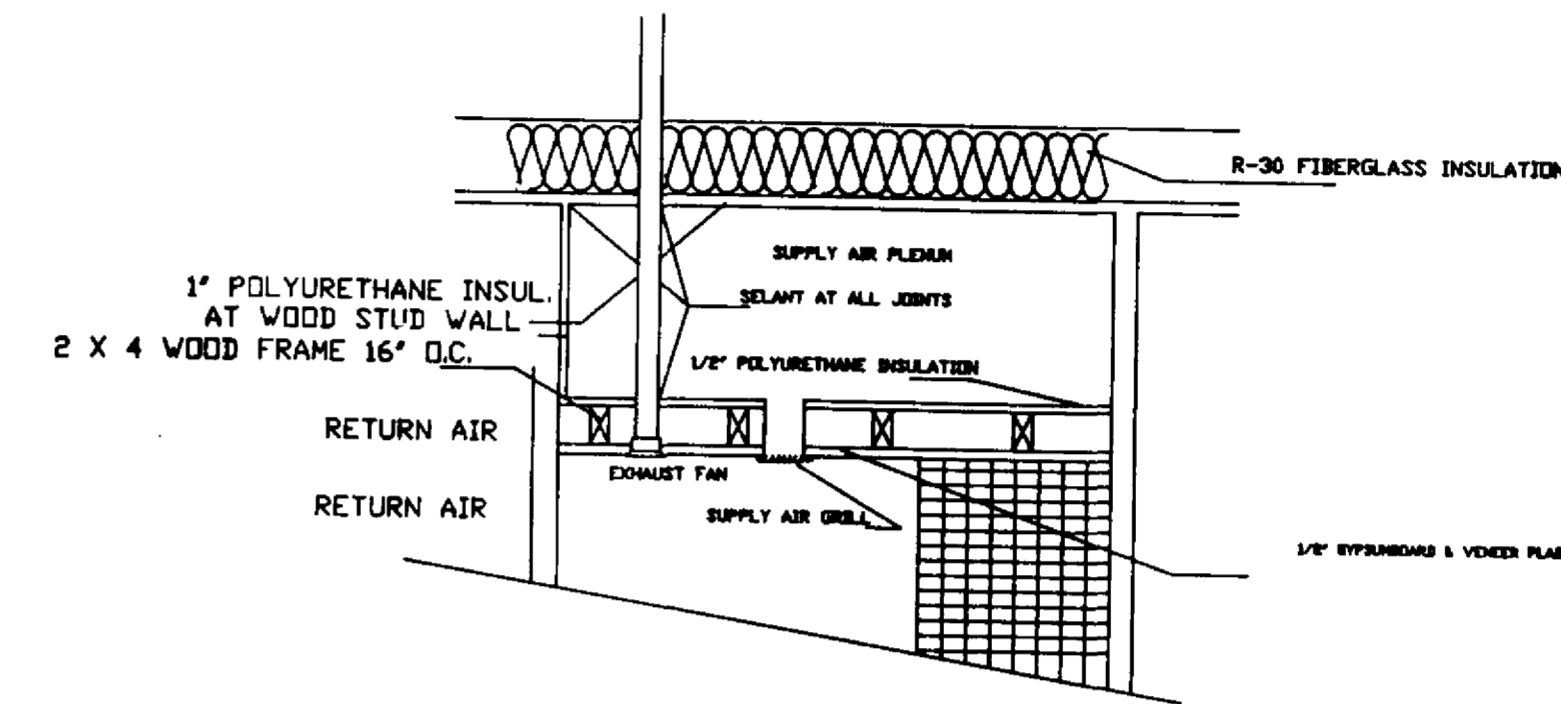
The Florida Solar Energy Center, and the Designer, Architects, Judges, Plans Designers, and Artists involved in developing these drawings and specifications (hereinafter referred to "FSEC/Contractors") make no statement, representation, claim or warranty, whether express, implied or statutory with respect to these plans and specifications. Any implied warranties of merchantability or fitness for a particular purpose are hereby disclaimed.

FSEC/Contractors assume no liability for, and by its use Purchaser hereby releases FSEC/Contractors from all liability for, damages, losses or injury, whether direct, indirect, consequential or incidental, including, but not limited to personal injury, death and damage to property, whether or not due to or caused by FSEC/Contractors negligence, that may arise from or be connected with uses of these drawings and specifications. FSEC/Contractor does not authorize any person, whether employees or agents of FSEC/Contractor or otherwise, to make any representation or warranty or to assume any liability with respect to these drawings and specifications.

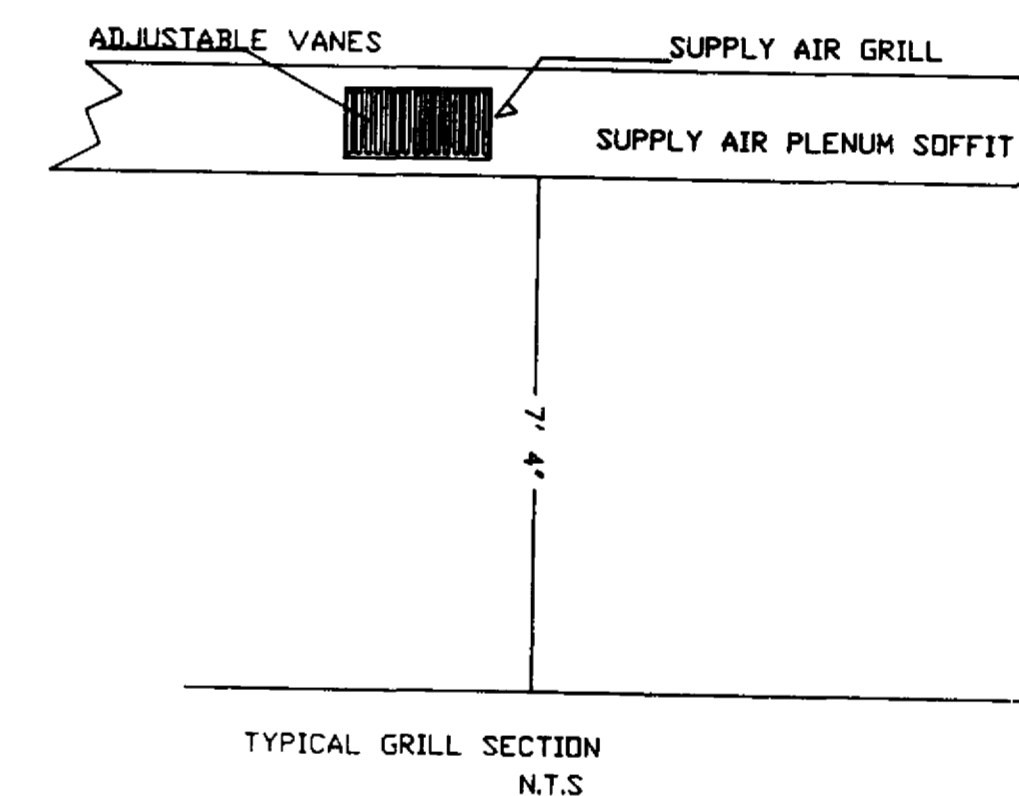


EXHAUST FAN SCHEDULE

E.F.#	MAKE	SONES	CFM	VOLTS	Hz	PHASE
1 & 2		≤ 2	50	115	60	1



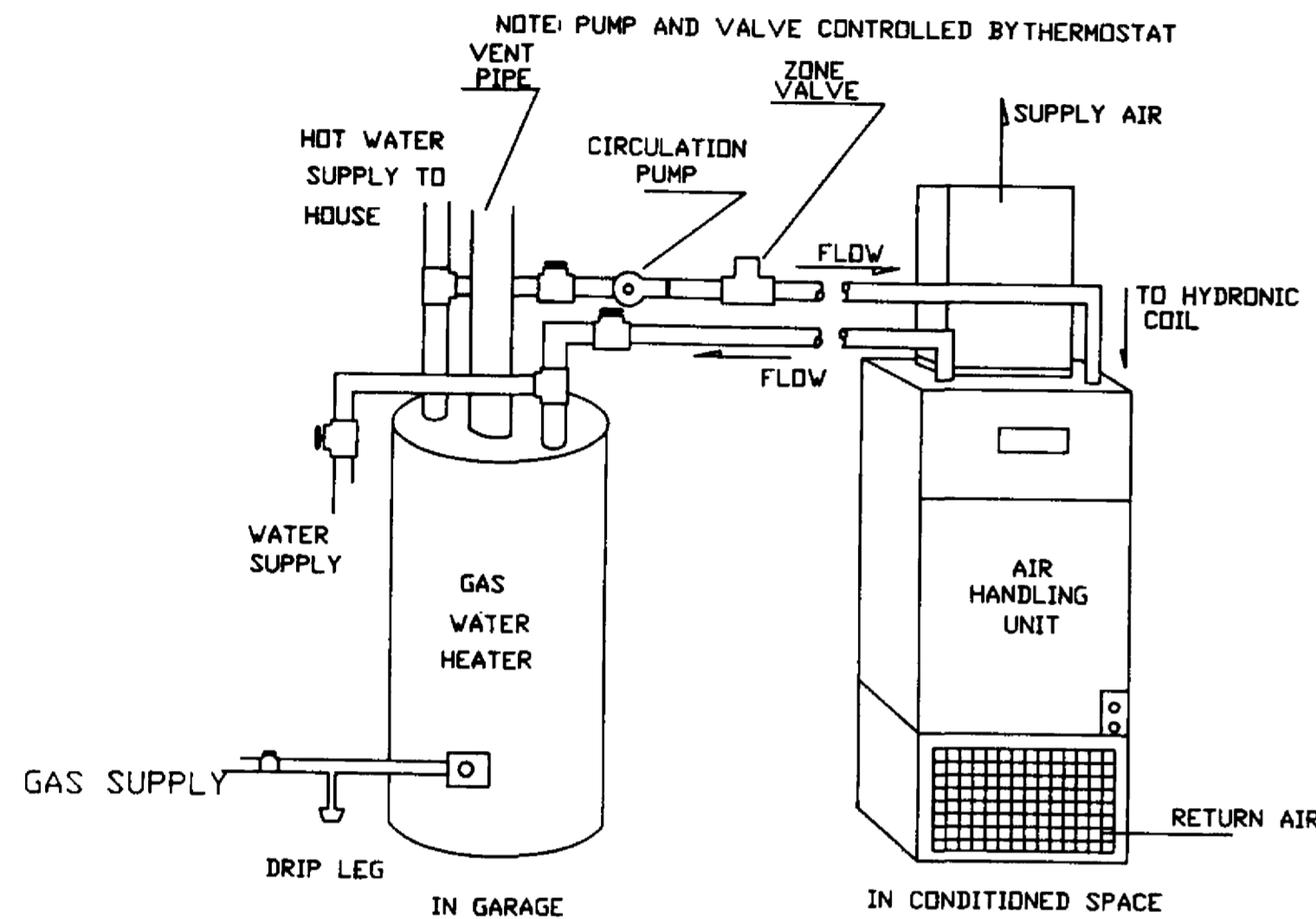
TYPICAL BATH ROOM SUPPLY AIR PLENUM ENCLOSURE



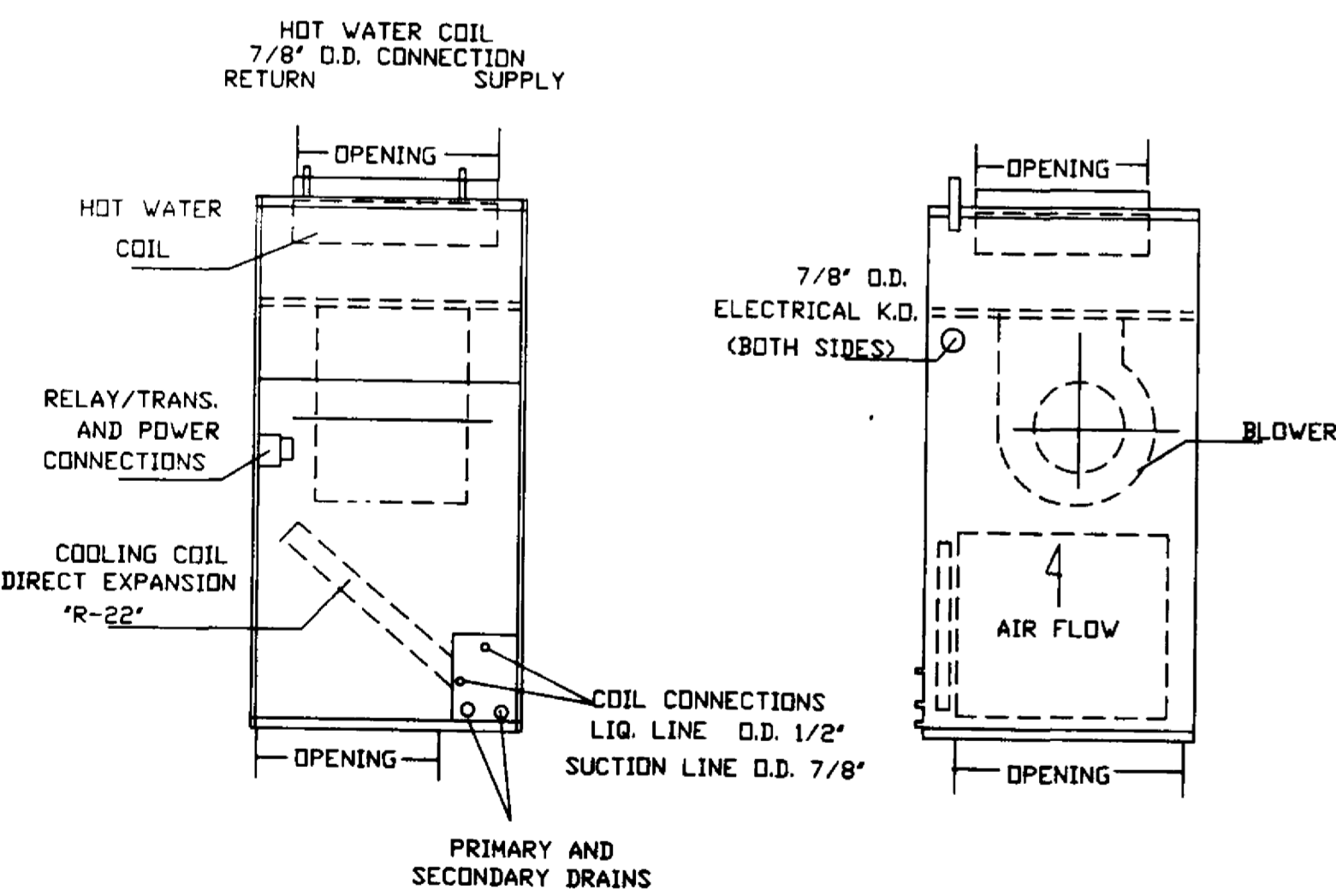
COMFORT CONDITIONING SCHEDULE WITH GAS HEAT

COOLING CAPACITY REQUIRED: 33,700 BTUH ■ MINIMUM RECOMMENDED SEER: 11.0
 HEATING CAPACITY REQUIRED: 41,200 BTUH ■ RECOMMENDED TYPE OF EQUIPMENT: GAS HYDRONIC
 AIR FLOW REQUIRED (CFM): 1380 CFM ■ FURNACE (ALL COMBUSTION IS AT WATER HEATER)

SELECTED EQUIPMENT							
UNIT	MAKE	MODEL#	COOLING (BTUH)	SEER	HEATING (BTUH)	RECOVERY EFF.	TANK SIZE
CONDENSER							
DX COIL							
HYDRONIC HEAT WATER HEATER							
AHU							



INSTALL PER MANUFACTURER'S SPECIFICATION



DIRECT EXPANSION COOLING/HOT WATER HEATING FAN COIL UNIT DETAILED (N.T.S.)